

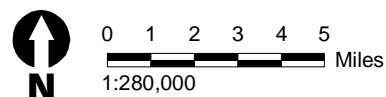
- Alternatives**
- All Alternatives
 - Indian Canyon Alternative
 - Wells Draw Alternative
 - Whitmore Park Alternative
 - Indian Canyon and Wells Draw
 - Indian Canyon and Whitmore Park

- Project Elements**
- Communication Tower
 - Terminal
 - Road Realignment
 - Access Road
 - Tunnel

- Existing Linear Features**
- Interstate Hwy
 - U.S. Hwy
 - State Route
 - County Road
 - Existing Rail Line

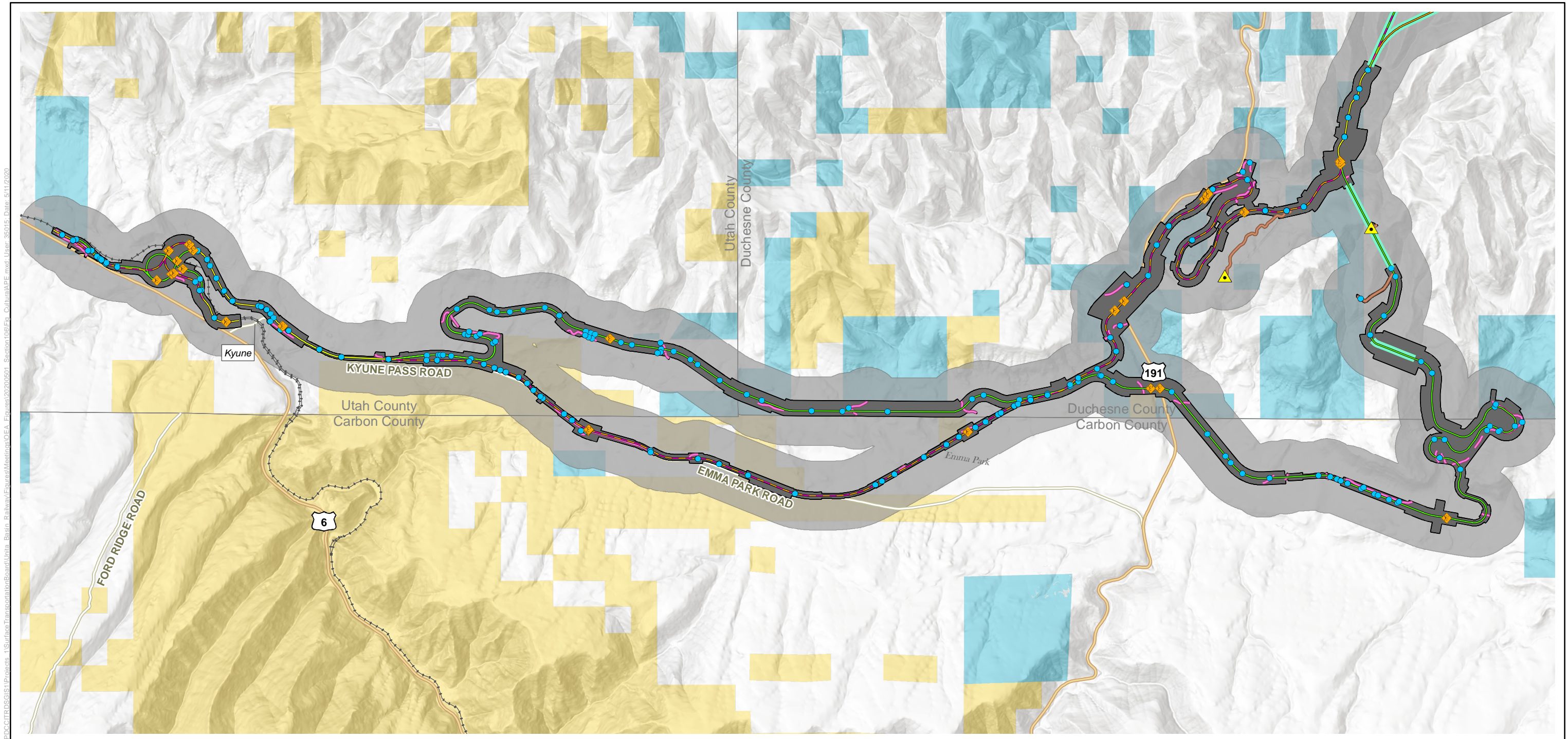
- Land Status**
- Bureau of Land Management
 - Bureau of Reclamation
 - Private Land
 - State Land
 - Tribal Trust Land
 - U.S. Forest Service
 - Original Uintah and Ouray Tribal Lands

- Area of Potential Effects**
- Project Footprint
 - 50' Buffer of Actual Project Footprint
 - 1,500' of Average Project Footprint



Date: 5/11/2020

Uinta Basin Railway - Cultural Resources Area of Potential Effects



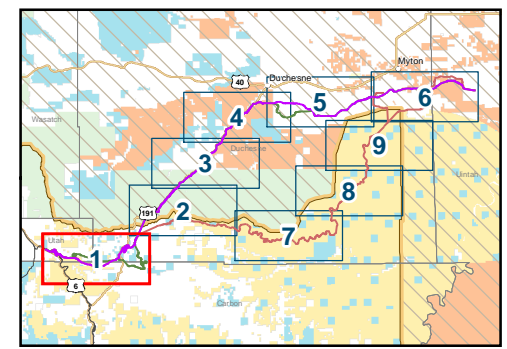
- Alternatives**
- All Alternatives
 - Indian Canyon Alternative
 - Wells Draw Alternative
 - Whitmore Park Alternative
 - Indian Canyon and Wells Draw
 - Indian Canyon and Whitmore Park

- Project Elements**
- ▲ Communication Tower
 - Terminal
 - ◆ Bridge
 - Culvert
 - Road Relocation
 - Access Road
 - Tunnel

- Existing Linear Features**
- Interstate Hwy
 - U.S. Hwy
 - State Route
 - County Road
 - - - Existing Rail Line

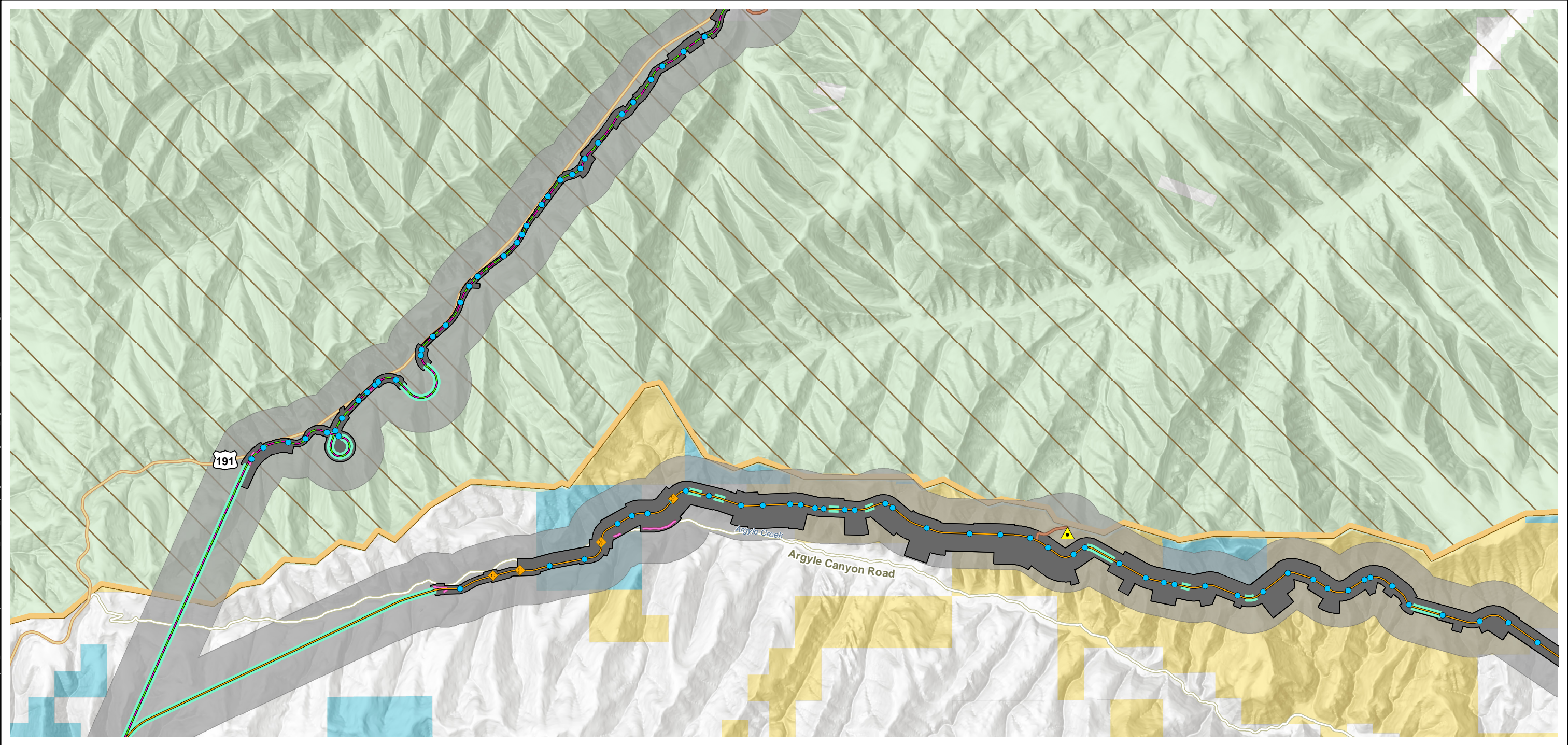
- Land Status**
- Bureau of Land Management
 - Bureau of Reclamation
 - Private Land
 - State Land
 - Tribal Trust Land
 - U.S. Forest Service
 - Original Uintah and Ouray Tribal Lands

- Area of Potential Effects**
- Project Footprint
 - 50' Buffer of Actual Project Footprint
 - 1,500' Buffer of Average Project Footprint



Date: 5/11/2020

I:\PROJECTS\GIS\1\Projects_1\Surface Transportation\Board\Unita Basin_Railway\Figures\Meetings\OEA_Figures\20200501_Section106\Fig_CulturalAPE.mxd User: 35015 Date: 5/11/2020



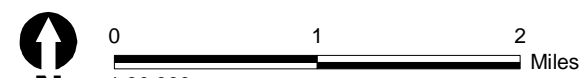
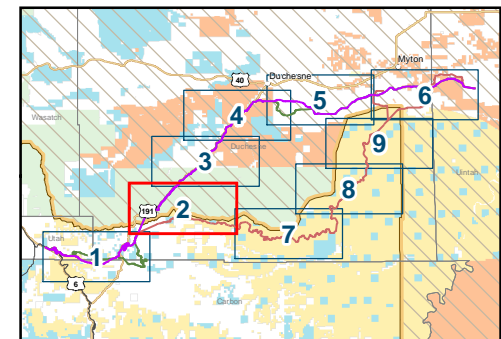
- Alternatives**
- All Alternatives
 - Indian Canyon Alternative
 - Wells Draw Alternative
 - Whitmore Park Alternative
 - Indian Canyon and Wells Draw
 - Indian Canyon and Whitmore Park

- Project Elements**
- ▲ Communication Tower
 - Terminal
 - ◆ Bridge
 - Culvert
 - Road Relocation
 - Access Road
 - Tunnel

- Existing Linear Features**
- Interstate Hwy
 - U.S. Hwy
 - State Route
 - County Road
 - - - Existing Rail Line

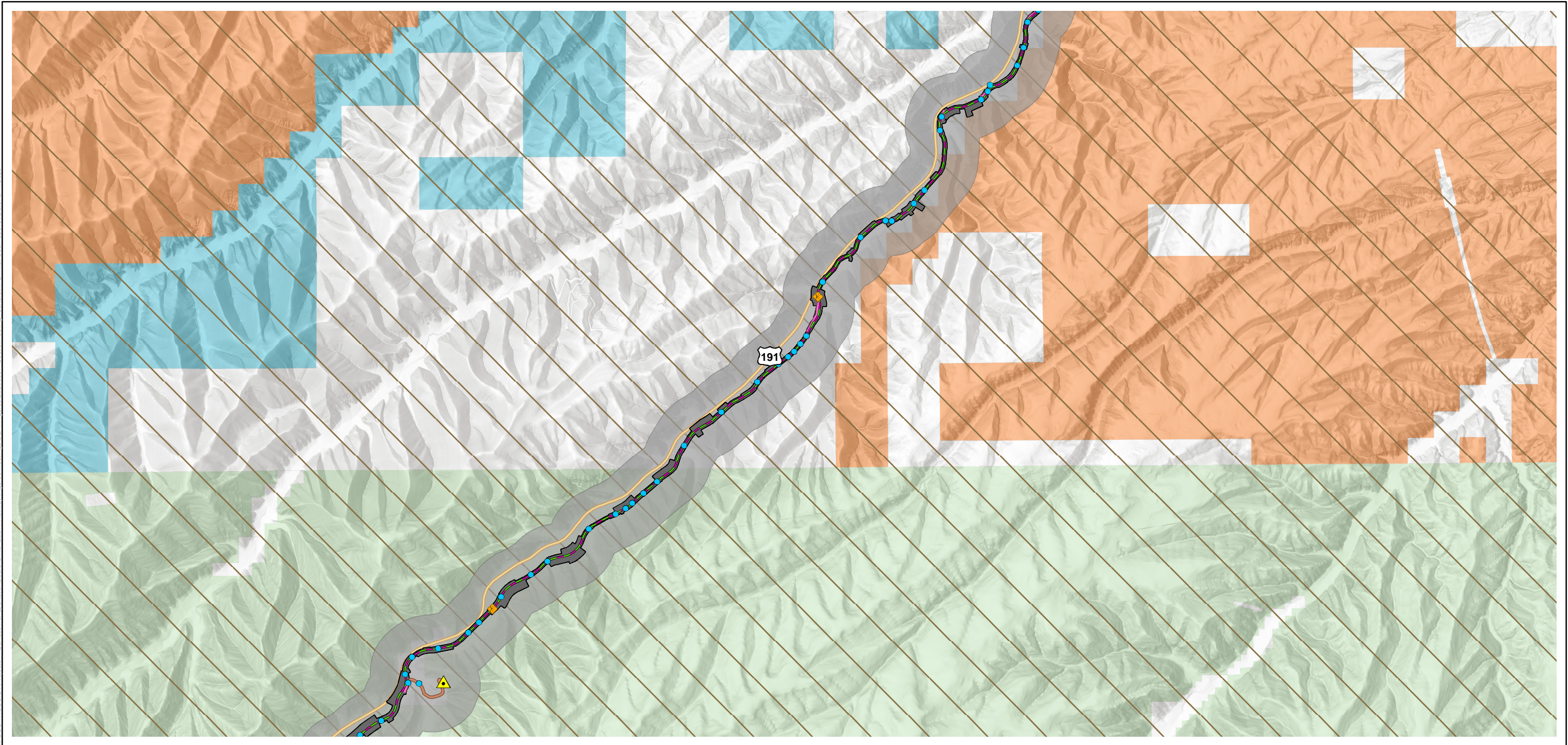
- Land Status**
- Bureau of Land Management
 - Bureau of Reclamation
 - Private Land
 - State Land
 - Tribal Trust Land
 - U.S. Forest Service
 - Original Uintah and Ouray Tribal Lands

- Area of Potential Effects**
- Project Footprint
 - 50' Buffer of Actual Project Footprint
 - 1,500' Buffer of Average Project Footprint



Date: 5/11/2020

I:\PROJECTS\GIS\1\Projects_1\SurfaceTransportation\Board\Unita_Basin_Railway\Figures\Meeting\OEA_Figures\20200501_Section106\Fig_CulturalAPE.mxd; User: 35015; Date: 5/11/2020



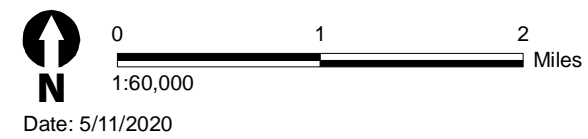
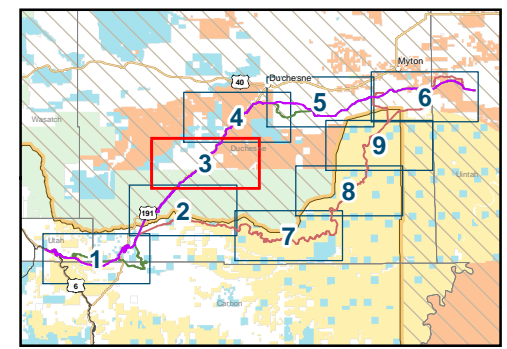
- Alternatives**
- All Alternatives
 - Indian Canyon Alternative
 - Wells Draw Alternative
 - Whitmore Park Alternative
 - Indian Canyon and Wells Draw
 - Indian Canyon and Whitmore Park

- Project Elements**
- ▲ Communication Tower
 - Terminal
 - ◆ Bridge
 - Culvert
 - Road Relocation
 - Access Road
 - Tunnel

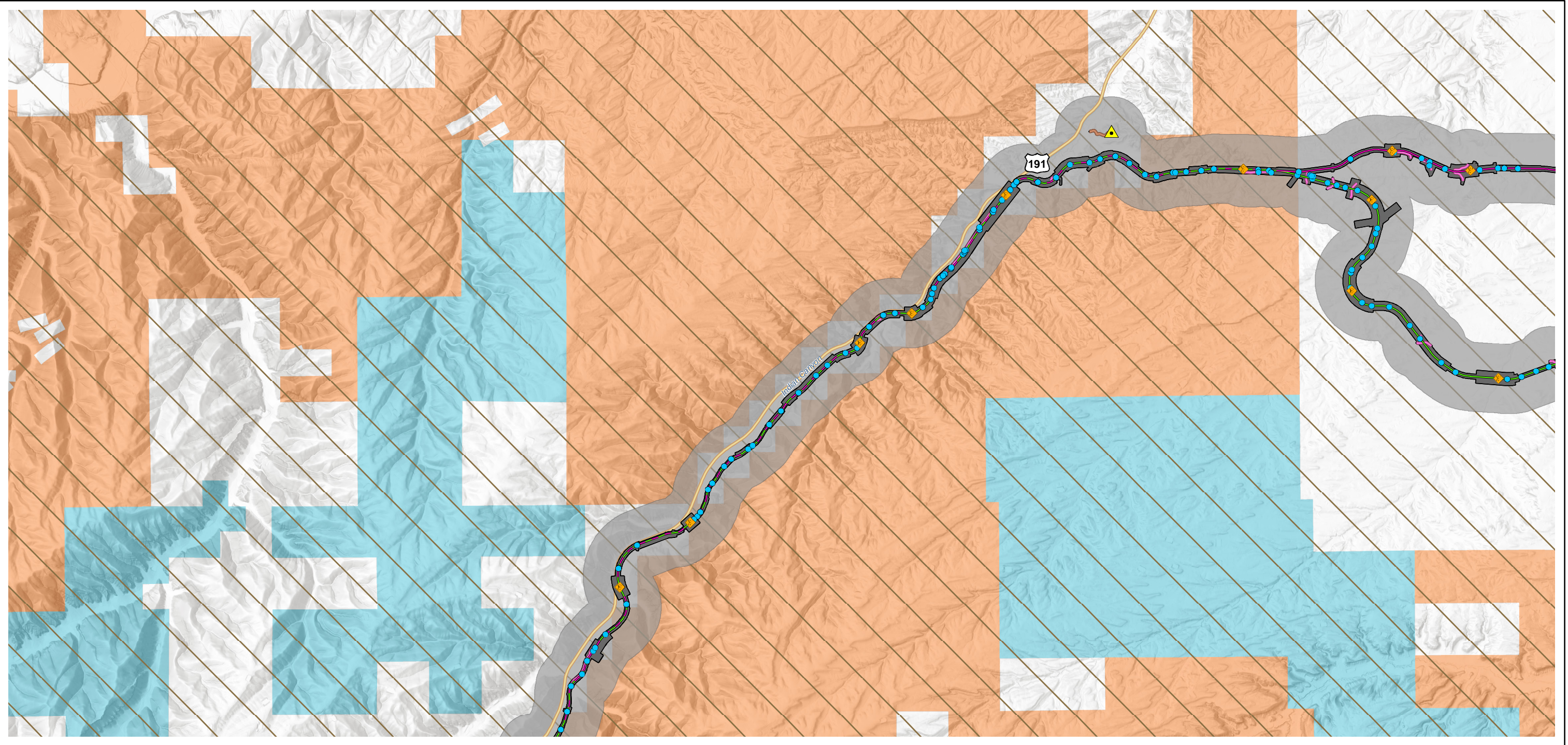
- Existing Linear Features**
- Interstate Hwy
 - U.S. Hwy
 - State Route
 - County Road
 - Existing Rail Line

- Land Status**
- Bureau of Land Management
 - Bureau of Reclamation
 - Private Land
 - State Land
 - Tribal Trust Land
 - U.S. Forest Service
 - Original Uintah and Ouray Tribal Lands

- Area of Potential Effects**
- Project Footprint
 - 50' Buffer of Actual Project Footprint
 - 1,500' Buffer of Average Project Footprint



I:\PROJECTS\GIS\Projects_1\Surface Transportation\Board\Units_Basin_Railway\Figures\Meetings\OEA_Figures\20200501_Section106\Ft_Cultural\APE.mxd User: 35015 Date: 5/11/2020



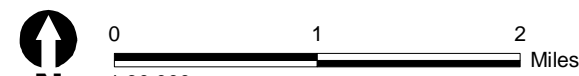
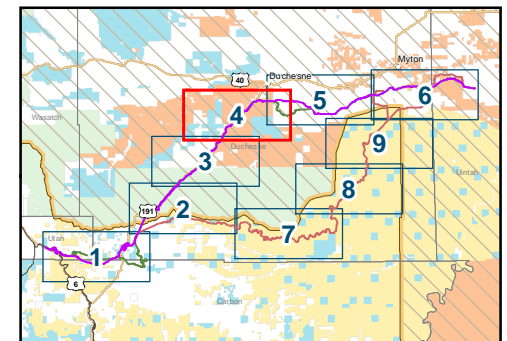
- Alternatives**
- All Alternatives
 - Indian Canyon Alternative
 - Wells Draw Alternative
 - Whitmore Park Alternative
 - Indian Canyon and Wells Draw
 - Indian Canyon and Whitmore Park

- Project Elements**
- ▲ Communication Tower
 - Terminal
 - ◆ Bridge
 - Culvert
 - Road Relocation
 - Access Road
 - Tunnel

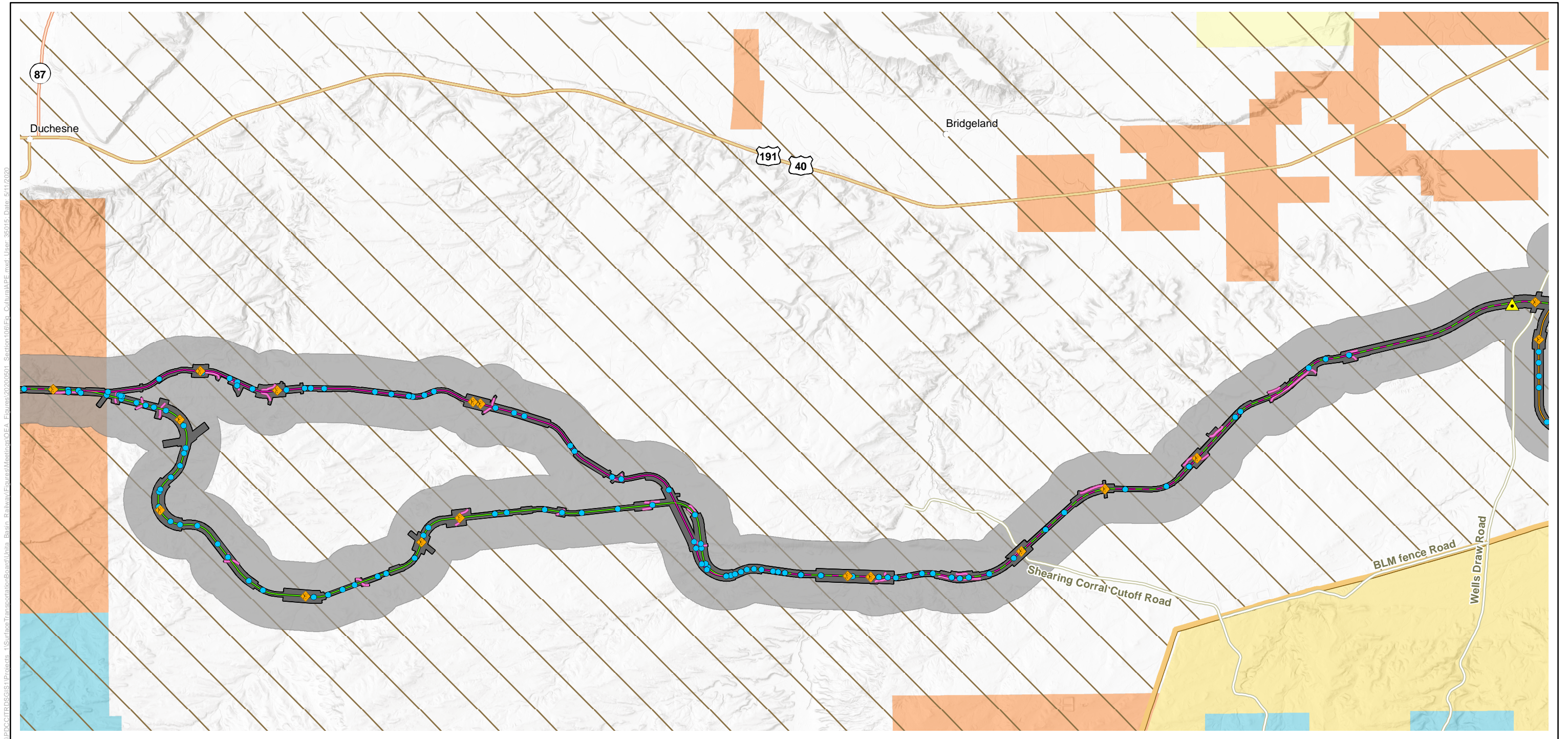
- Existing Linear Features**
- Interstate Hwy
 - U.S. Hwy
 - State Route
 - County Road
 - - - Existing Rail Line

- Land Status**
- Bureau of Land Management
 - Bureau of Reclamation
 - Private Land
 - State Land
 - Tribal Trust Land
 - U.S. Forest Service
 - Original Uintah and Ouray Tribal Lands

- Area of Potential Effects**
- Project Footprint
 - 50' Buffer of Actual Project Footprint
 - 1,500' Buffer of Average Project Footprint



Date: 5/11/2020



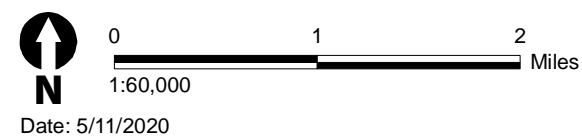
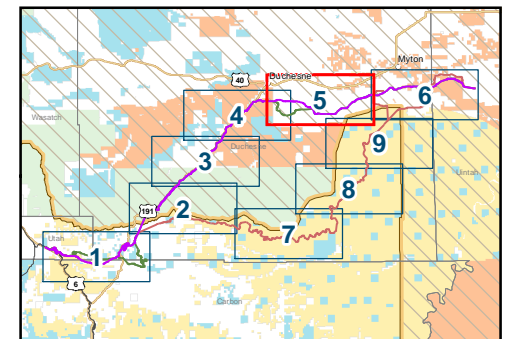
- Alternatives**
- All Alternatives
 - Indian Canyon Alternative
 - Wells Draw Alternative
 - Whitmore Park Alternative
 - Indian Canyon and Wells Draw
 - Indian Canyon and Whitmore Park

- Project Elements**
- ▲ Communication Tower
 - Terminal
 - ◆ Bridge
 - Culvert
 - Road Relocation
 - Access Road
 - Tunnel

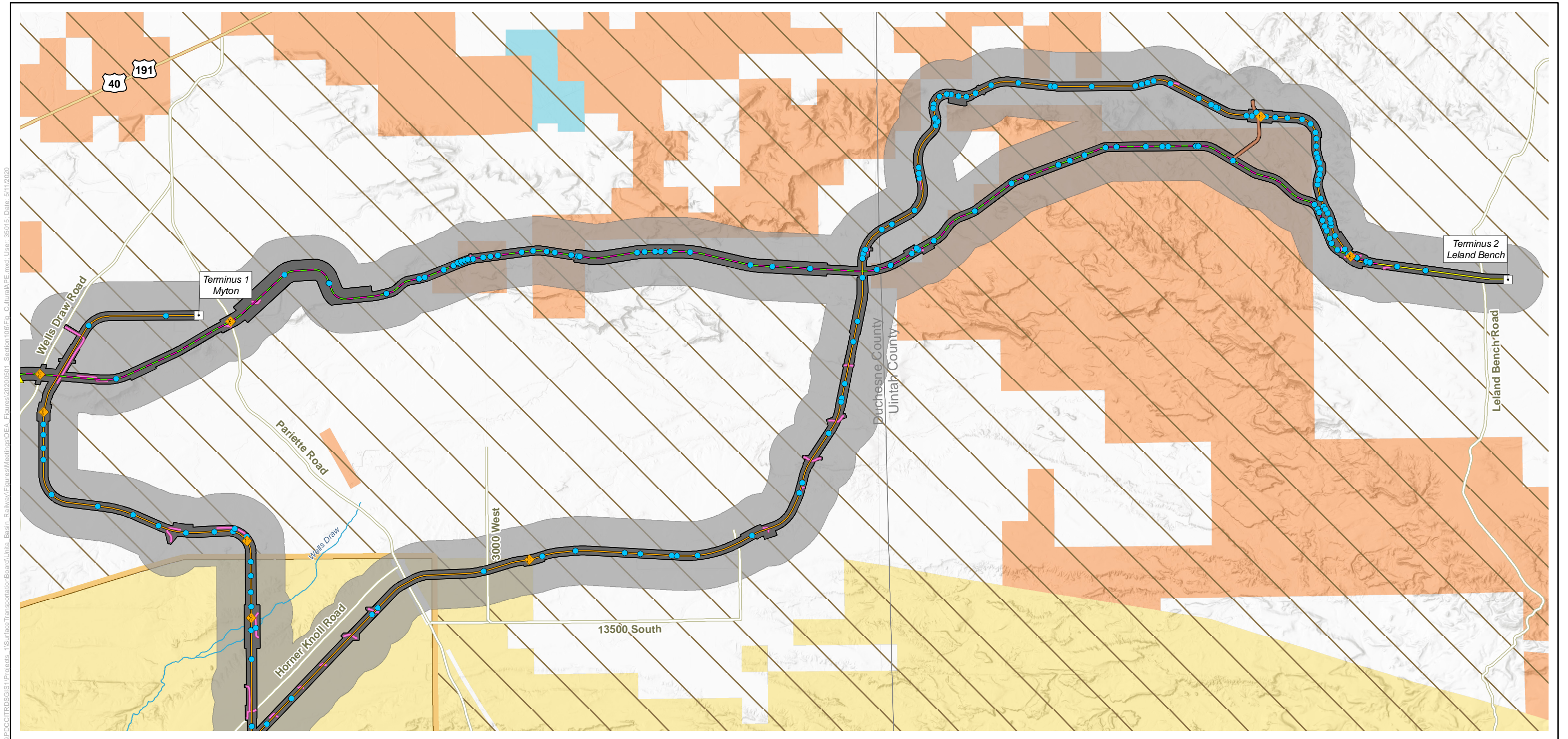
- Existing Linear Features**
- Interstate Hwy
 - U.S. Hwy
 - State Route
 - County Road
 - - - Existing Rail Line

- Land Status**
- Bureau of Land Management
 - Bureau of Reclamation
 - Private Land
 - State Land
 - Tribal Trust Land
 - U.S. Forest Service
 - Original Uintah and Ouray Tribal Lands

- Area of Potential Effects**
- Project Footprint
 - 50' Buffer of Actual Project Footprint
 - 1,500' Buffer of Average Project Footprint



Date: 5/11/2020



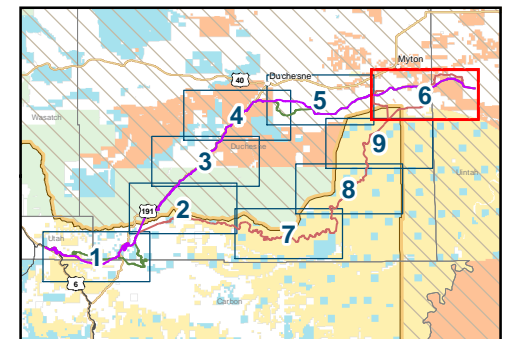
- Alternatives**
- All Alternatives
 - Indian Canyon Alternative
 - Wells Draw Alternative
 - Whitmore Park Alternative
 - Indian Canyon and Wells Draw
 - Indian Canyon and Whitmore Park

- Project Elements**
- ▲ Communication Tower
 - Terminal
 - ◆ Bridge
 - Culvert
 - Road Relocation
 - Access Road
 - Tunnel

- Existing Linear Features**
- Interstate Hwy
 - U.S. Hwy
 - State Route
 - County Road
 - Existing Rail Line

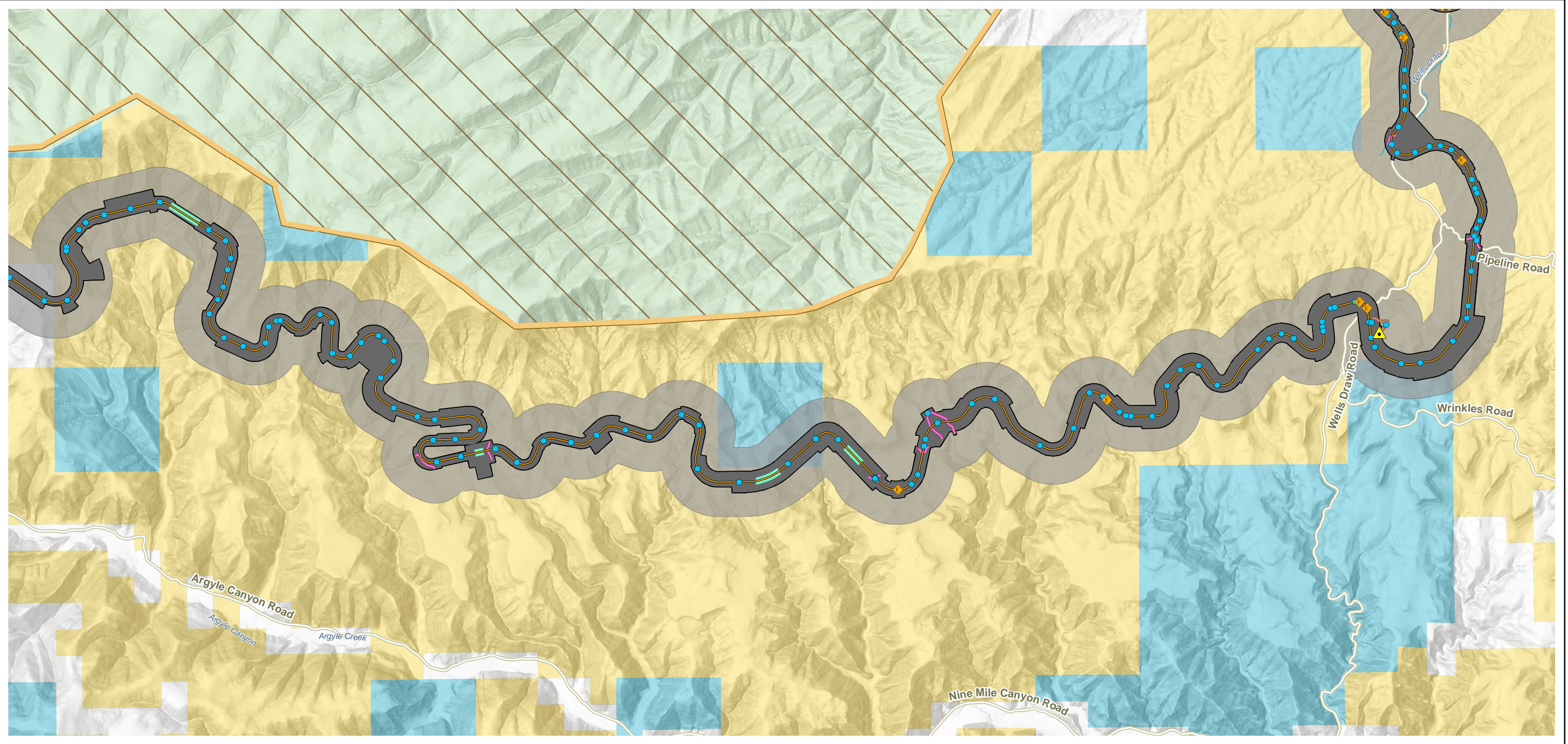
- Land Status**
- Bureau of Land Management
 - Bureau of Reclamation
 - Private Land
 - State Land
 - Tribal Trust Land
 - U.S. Forest Service
 - Original Uintah and Ouray Tribal Lands

- Area of Potential Effects**
- Project Footprint
 - 50' Buffer of Actual Project Footprint
 - 1,500' Buffer of Average Project Footprint



Date: 5/11/2020

I:\PROJECTS\GIS\1\Projects_1\SurfaceTransportation\Board\Unita_Basin_Railway\Figures\Meetings\OEA_Figures\20200501_Section106\Fig_CulturalAPE.mxd_User: 35015; Date: 5/11/2020



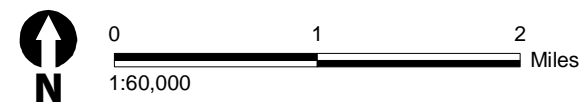
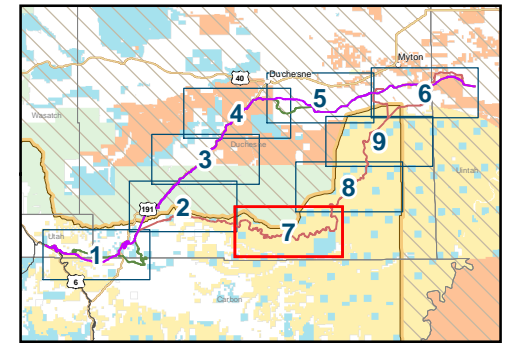
- Alternatives**
- All Alternatives
 - Indian Canyon Alternative
 - Wells Draw Alternative
 - Whitmore Park Alternative
 - Indian Canyon and Wells Draw
 - Indian Canyon and Whitmore Park

- Project Elements**
- ▲ Communication Tower
 - Terminal
 - ◆ Bridge
 - Culvert
 - Road Relocation
 - Access Road
 - Tunnel

- Existing Linear Features**
- Interstate Hwy
 - U.S. Hwy
 - State Route
 - County Road
 - Existing Rail Line

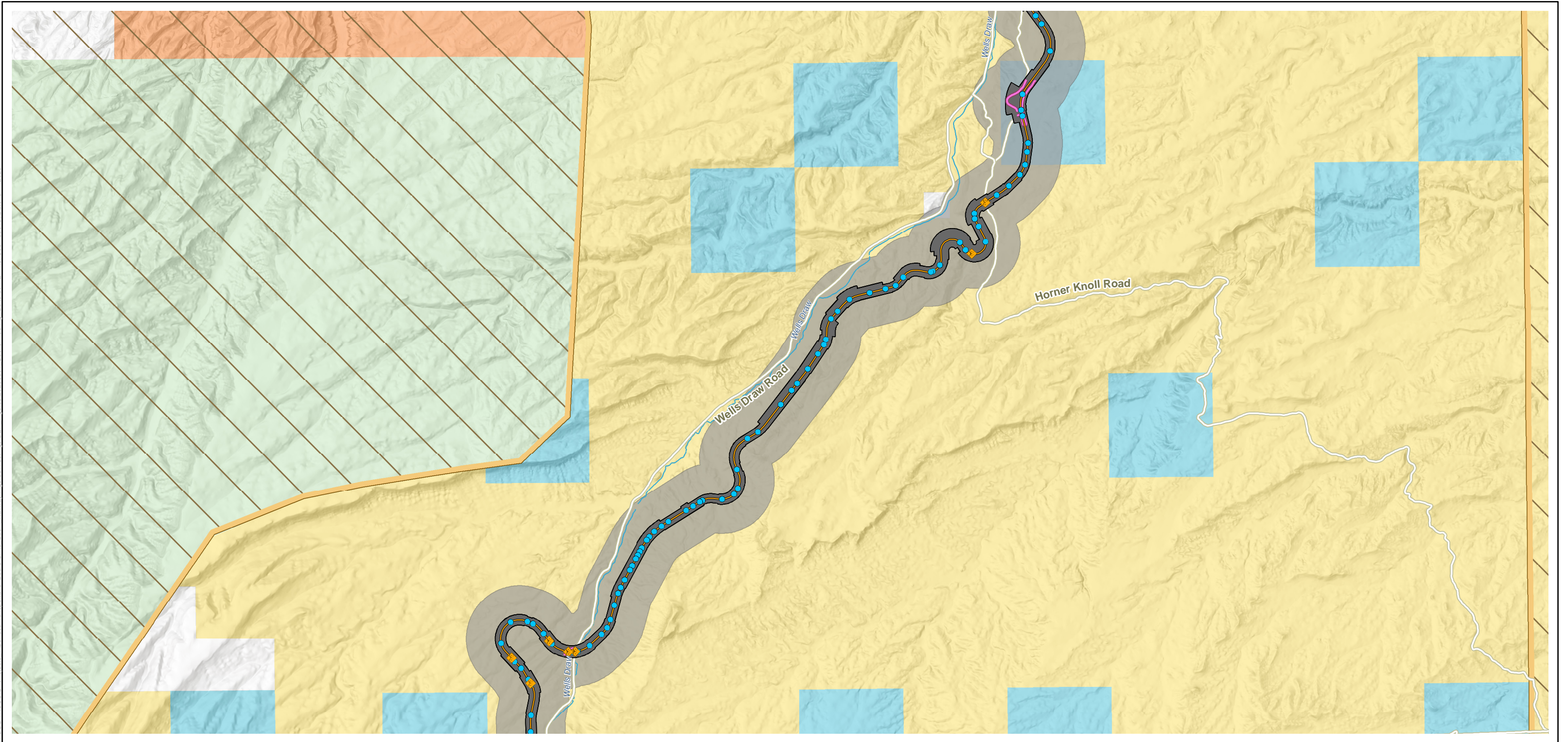
- Land Status**
- Bureau of Land Management
 - Bureau of Reclamation
 - Private Land
 - State Land
 - Tribal Trust Land
 - U.S. Forest Service
 - Original Uintah and Ouray Tribal Lands

- Area of Potential Effects**
- Project Footprint
 - 50' Buffer of Actual Project Footprint
 - 1,500' Buffer of Average Project Footprint



Date: 5/11/2020

I:\PROJECTS\GIS\Projects_1\Surface Transportation\Board\Unita_Basin_Railway\Figures\Meetings\OEA_Figures\20200501_Section106\Fig_CulturalAPE.mxd_User_35015_Date: 5/11/2020



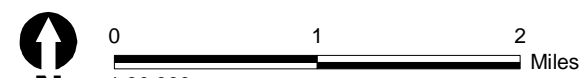
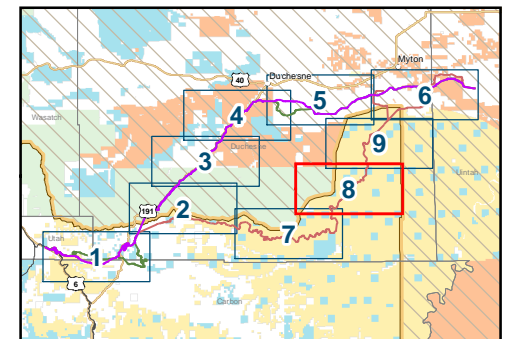
- Alternatives**
- All Alternatives
 - Indian Canyon Alternative
 - Wells Draw Alternative
 - Whitmore Park Alternative
 - Indian Canyon and Wells Draw
 - Indian Canyon and Whitmore Park

- Project Elements**
- ▲ Communication Tower
 - Terminal
 - ◆ Bridge
 - Culvert
 - Road Relocation
 - Access Road
 - Tunnel

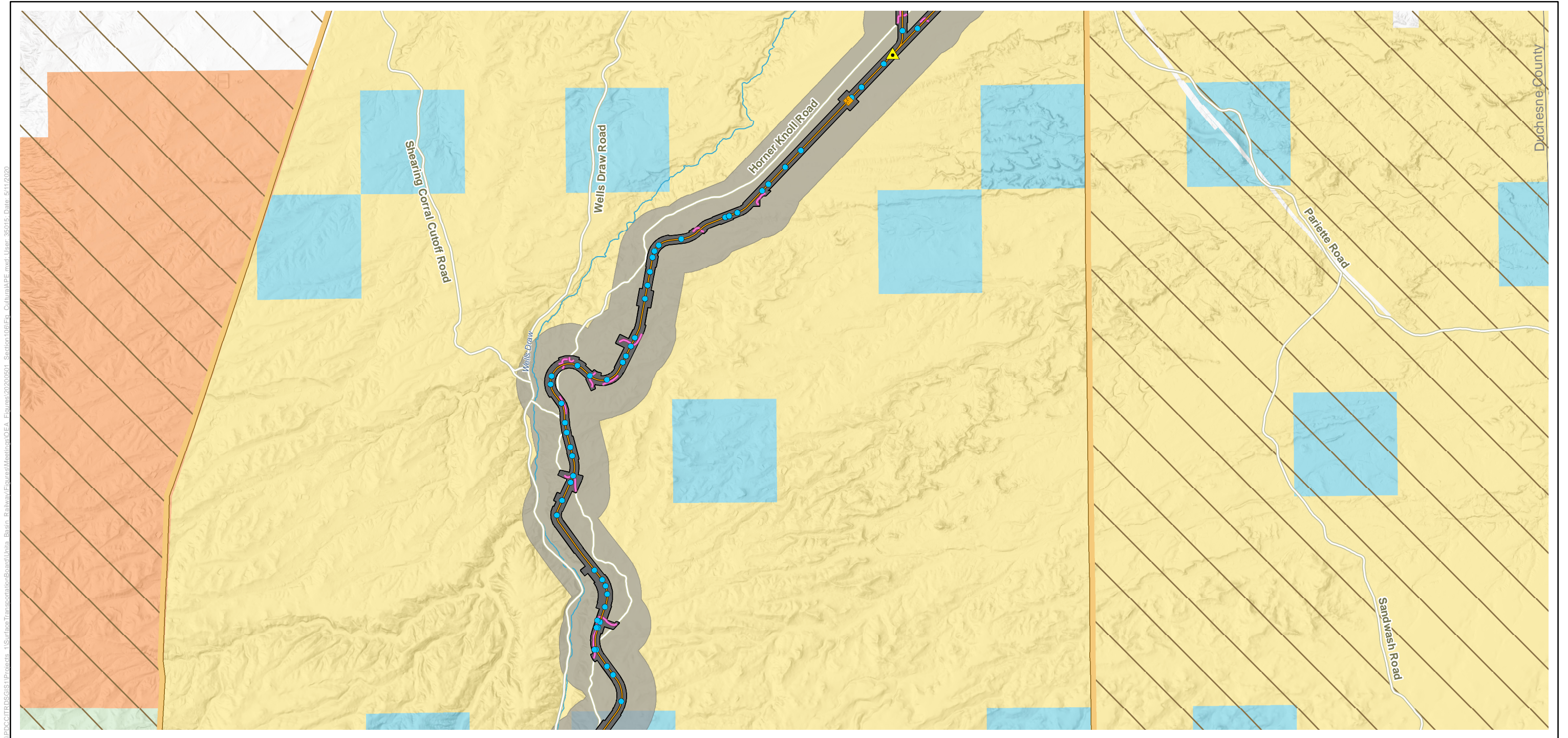
- Existing Linear Features**
- Interstate Hwy
 - U.S. Hwy
 - State Route
 - County Road
 - - - Existing Rail Line

- Land Status**
- Bureau of Land Management
 - Bureau of Reclamation
 - Private Land
 - State Land
 - Tribal Trust Land
 - U.S. Forest Service
 - Original Uintah and Ouray Tribal Lands

- Area of Potential Effects**
- Project Footprint
 - 50' Buffer of Actual Project Footprint
 - 1,500' Buffer of Average Project Footprint



Date: 5/11/2020



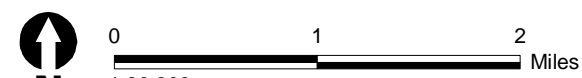
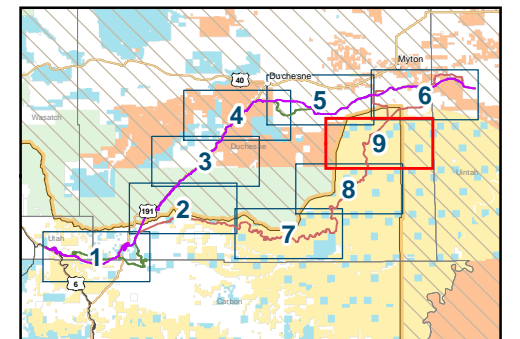
- Alternatives**
- All Alternatives
 - Indian Canyon Alternative
 - Wells Draw Alternative
 - Whitmore Park Alternative
 - Indian Canyon and Wells Draw
 - Indian Canyon and Whitmore Park

- Project Elements**
- ▲ Communication Tower
 - Terminal
 - ◆ Bridge
 - Culvert
 - Road Relocation
 - Access Road
 - Tunnel

- Existing Linear Features**
- Interstate Hwy
 - U.S. Hwy
 - State Route
 - County Road
 - Existing Rail Line

- Land Status**
- Bureau of Land Management
 - Bureau of Reclamation
 - Private Land
 - State Land
 - Tribal Trust Land
 - U.S. Forest Service
 - Original Uintah and Ouray Tribal Lands

- Area of Potential Effects**
- Project Footprint
 - 50' Buffer of Actual Project Footprint
 - 1,500' Buffer of Average Project Footprint



Date: 5/11/2020