



Uinta Basin Railway

ENVIRONMENTAL IMPACT STATEMENT

Section 106 Consulting Party Teleconference 3

Uinta Basin Railway EIS
March 25, 2020



Uinta Basin Railway

ENVIRONMENTAL IMPACT STATEMENT

Agenda

- Introductions
- Project Updates
- Area of Potential Effects
- Identification and Evaluation
- Next Steps
- Draft Agenda for Next Call



Uinta Basin Railway

ENVIRONMENTAL IMPACT STATEMENT

Introductions

Lead Agency - 800.2 (a) (2)

- Surface Transportation Board

Other Federal Agencies – 800.2 (a)

- Bureau of Land Management
- U.S. Forest Service, Ashley National Forest
- U.S. Army Corps of Engineers
- Bureau of Indian Affairs
- U.S. Environmental Protection Agency

Council – 800.2 (b)

- Advisory Council on Historic Preservation

State Historic Preservation Officer – 800.2 (c) (1)

- Utah Division of State History

Indian Tribes – 800.2 (c) (2) (i)

- Ute Indian Tribe of the Uintah and Ouray Reservation

Indian Tribes – 800.2 (c) (2) (ii)

- The Hopi Tribe of Arizona

Representatives of Local Governments – 800.2 (c) (3)

- Utah Public Lands Policy Coordinating Office
- Uintah County
- Duchesne County
- Carbon County

Applicant for Federal permit – 800.2 (c) (4)

- Seven County Infrastructure Coalition

Additional Consulting Parties 800.2. (c) (5)

- State Institutional Trust Lands Administration
- Nine Mile Canyon Coalition
- Colorado Plateau Archaeological Alliance



Uinta Basin Railway

ENVIRONMENTAL IMPACT STATEMENT

Consultation to Date Invited Consulting Parties

Accepted Consulting Party Status

Advisory Council on Historic Preservation	Seven County Infrastructure Coalition
BLM Price Field Office	State Institutional Trust Lands Administration
BLM Vernal Field Office	The Hopi Tribe of Arizona
Bureau of Indian Affairs, Uintah and Ouray Agency	U.S. Army Corps of Engineers, Sacramento District
Bureau of Indian Affairs, Western Region	U.S. Environmental Protection Agency
Carbon County	U.S. Forest Service, Ashley National Forest, Duchesne/Roosevelt Ranger District
Colorado Plateau Archaeological Alliance	Uintah County
Duchesne County	Utah Division of State History
Nine Mile Canyon Coalition	Ute Indian Tribe of the Uintah and Ouray Reservation
Public Lands Policy Coordinating Office	---



Uinta Basin Railway

ENVIRONMENTAL IMPACT STATEMENT

Project Introduction and Updates

Project Overview

Project Map

Environmental Review Process

National Historic Preservation Act

Public Involvement

Documents & Links

Project Mailing List

Contact Us

HOME PAGE

Welcome to the project website for the Uinta Basin Railway Environmental Impact Statement (EIS).

Project Introduction

The Seven County Infrastructure Coalition (Coalition) plans to file a request with the Surface Transportation Board (Board) for authority to construct and operate an approximately 85-mile common-carrier rail line connecting two termini in the Uinta Basin near South Myton Bench, Utah, and Leland Bench, Utah, to the national rail network. The construction and operation of this proposed project has the potential to result in significant environmental impacts. Therefore, the Board's Office of Environmental Analysis (OEA) has determined that the preparation of an EIS is appropriate pursuant to the National Environmental Policy Act (NEPA).

Project Updates

- OEA issued a Notice of Availability of the Final Scope of Study for the EIS in the Federal Register on December 13, 2019. [Click here to view.](#)
- The scoping public comment period is now closed. [Click here](#) to learn more about the scoping process.
- Information from the July 2019 public scoping meetings is available to review. [Click here to view.](#)
- OEA issued a Notice of Intent and Draft Scope of Study for the EIS in the Federal Register, initiating the scoping process, on June 19, 2019. To see the Notice of Intent and Draft Scope of Study, [click here](#).
- If you wish to be added to the project mailing list, [click here](#).

This project website was developed and is maintained by the Surface Transportation Board, the lead federal agency responsible for preparing the Uinta Basin Railway Environmental Impact Statement. The Seven County Infrastructure Coalition has no role in determining the content of this website.



Uinta Basin Railway

ENVIRONMENTAL IMPACT STATEMENT

New Information on the Project Website

➤ February consulting party teleconference

☐ Powerpoint presentation

☐ Meeting summary

➤ Area of Potential Effects

☐ Memorandum

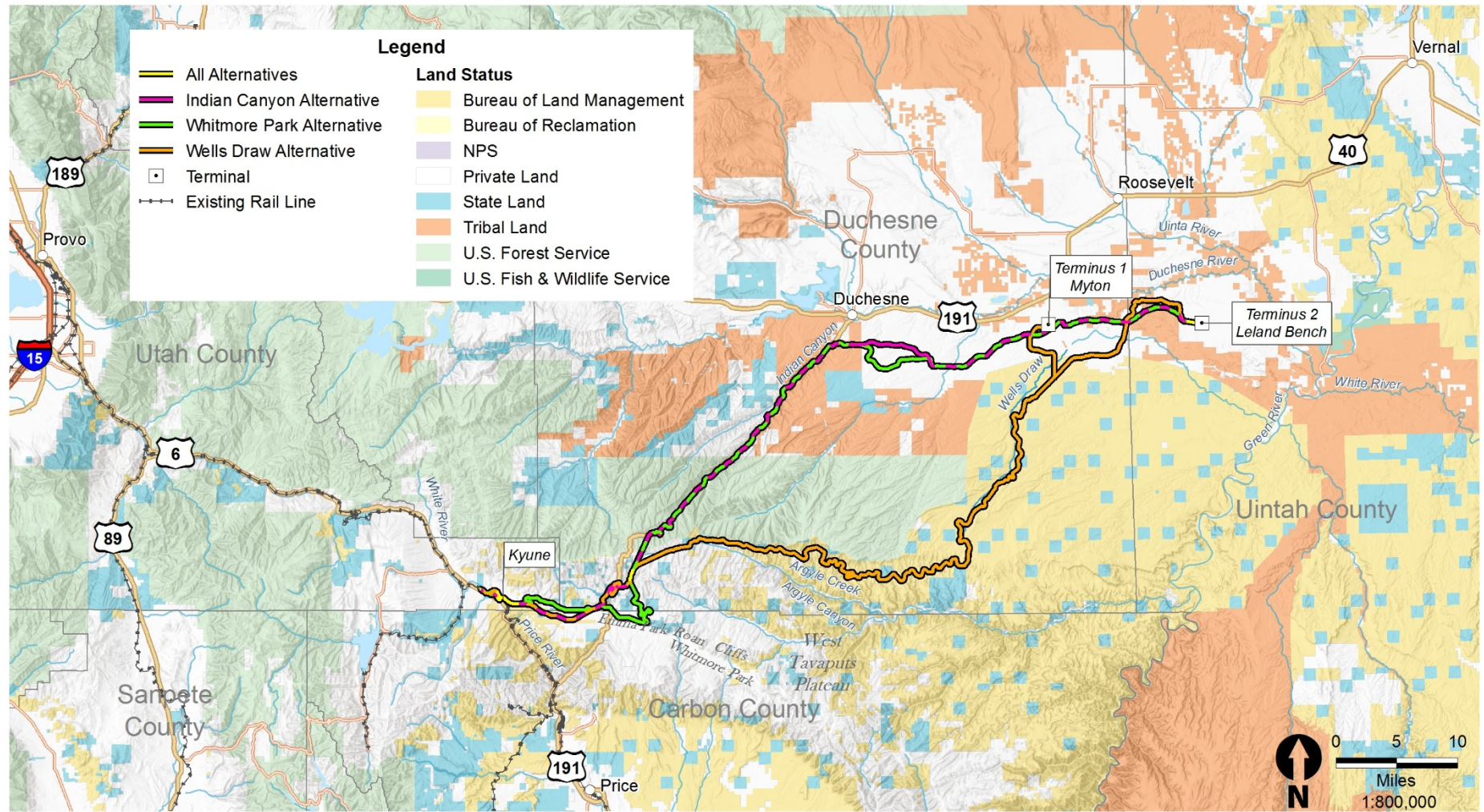
☐ Map book

<http://uintabasinrailwayeis.com/>



Uinta Basin Railway

ENVIRONMENTAL IMPACT STATEMENT





Uinta Basin Railway

ENVIRONMENTAL IMPACT STATEMENT

Project Review and Updates

- Three alternatives
 - Indian Canyon
 - Wells Draw
 - Whitmore Park
- Section 106 – phased identification and evaluation
 - Anticipate development of programmatic agreement per CFR 800.4 (b) (2)
- Coalition continues to provide refined design and engineering details



Uinta Basin Railway

ENVIRONMENTAL IMPACT STATEMENT

Area of Potential Effects

➤ Construction Easement

- ☐ Areas of permanent and temporary disturbance
- ☐ Includes buffer for construction access
- ☐ Includes tunnels, road realignments and comm. towers
 - ✓ Depicted on APE map
- ☐ Includes bridges, culverts and crossings
 - ✓ Specific locations not depicted on APE map
- ☐ Does not include access roads to comm. towers
 - ✓ OEA added logical access roads
 - ✓ Depicted on APE map

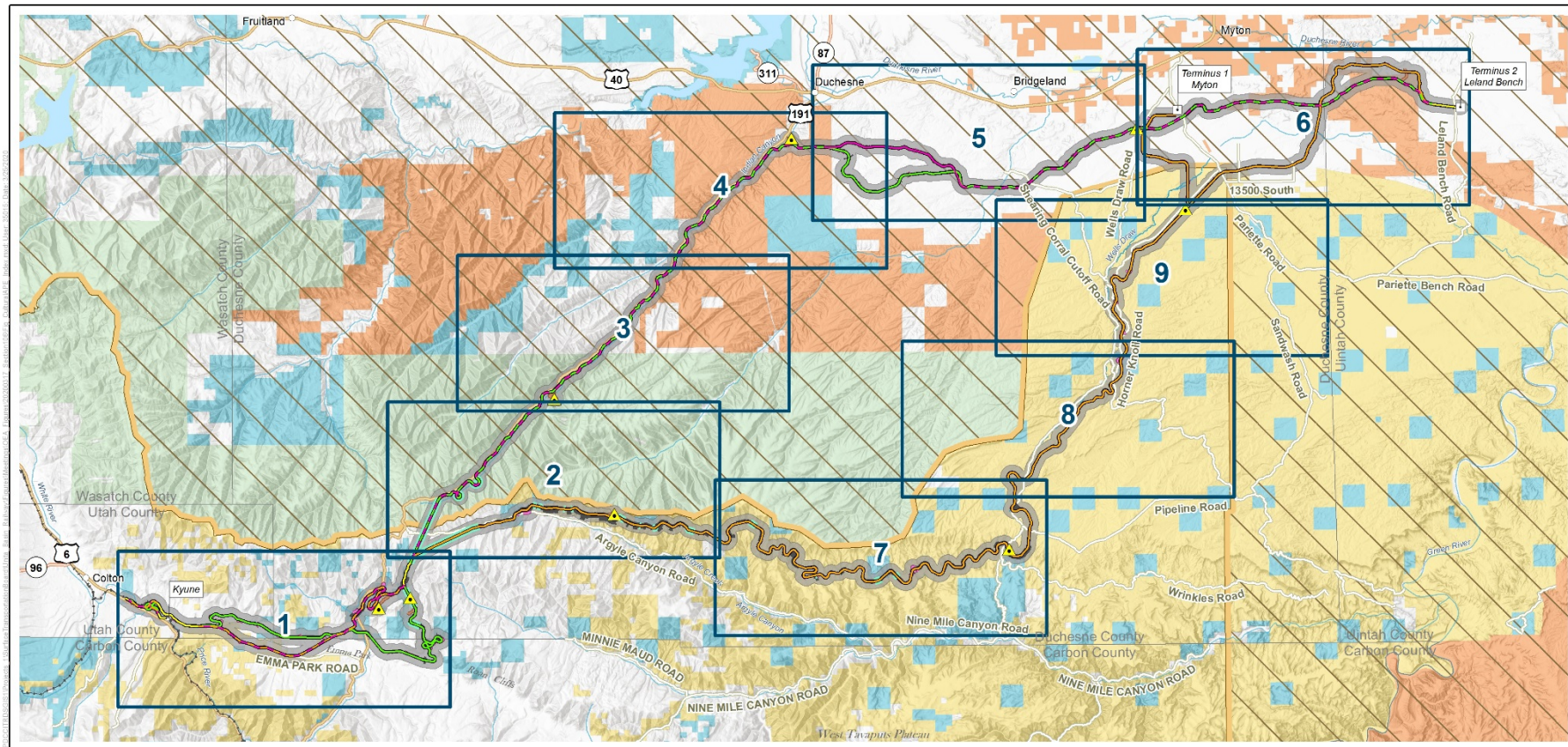


Uinta Basin Railway

ENVIRONMENTAL IMPACT STATEMENT

Area of Potential Effects

- Archaeology
 - ☐ Construction easement
 - ☐ Irregular size/shape
 - ☐ Average 240' from centerline / each side
- Historical Architecture
 - ☐ 1,740' buffer from centerline / each side
 - ☐ 240' average from centerline + 1,500'
 - ☐ Total 3,480' wide APE
- APE may evolve as Coalition continues to refine project

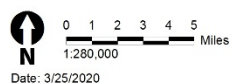


- All Alternatives
- Indian Canyon Alternative
- Wells Draw Alternative
- Whitmore Park Alternative
- Indian Canyon and Wells Draw
- Indian Canyon and Whitmore Park
- Tunnel

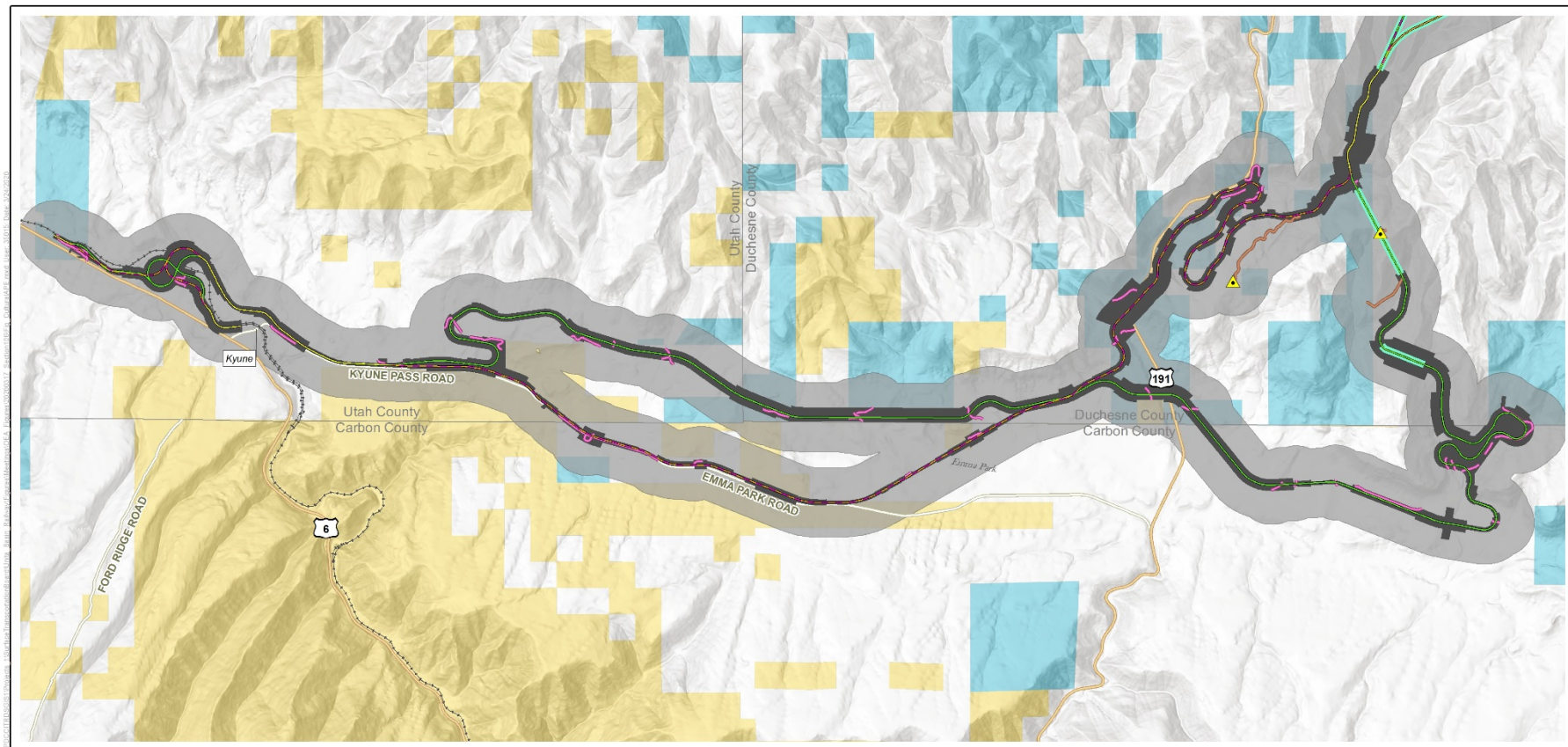
- ▲ Communication Tower
- Terminal
- Road Realignment
- Access Road
- Limits of Disturbance/ Archaeological APE
- Historical Architecture APE

- Existing Rail Line
- Interstate Hwy
- U.S. Hwy
- State Route
- County Road
- Original Uintah and Ouray Tribal Lands

- Land Status**
- Bureau of Land Management
 - Bureau of Reclamation
 - Private Land
 - State Land
 - Tribal Trust Land
 - U.S. Forest Service

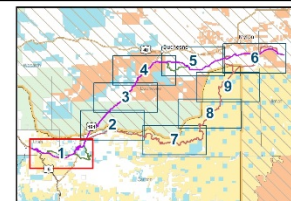
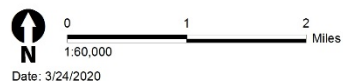


Uinta Basin Railway - Cultural Resources Area of Potential Effects

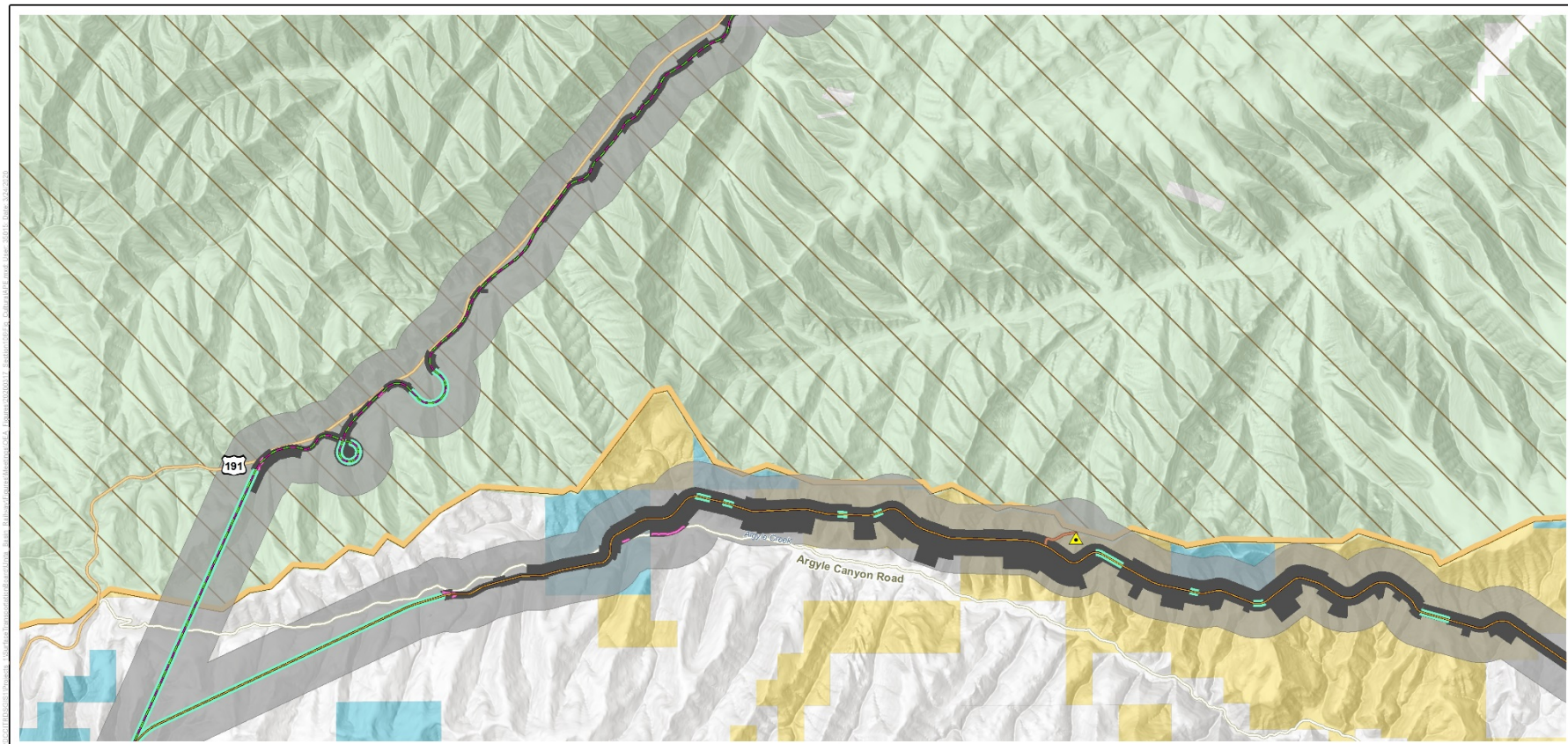


- All Alternatives
- Indian Canyon Alternative
- Wells Draw Alternative
- Whitmore Park Alternative
- Indian Canyon and Wells Draw
- Indian Canyon and Whitmore Park
- Terminal
- Tunnel
- ▲ Communication Tower
- Road Realignment
- Access Road
- Limits of Disturbance/Archaeological APE
- Historical Architecture APE
- ++++ Existing Rail Line
- Interstate Hwy
- U.S. Hwy
- State Route
- County Road
- Original Uintah and Ouray Tribal Lands

- Land Status**
- Bureau of Land Management
 - Bureau of Reclamation
 - Private Land
 - State Land
 - Tribal Trust Land
 - U.S. Forest Service

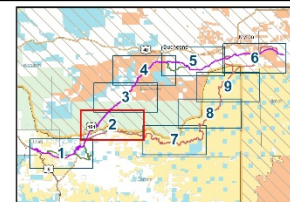
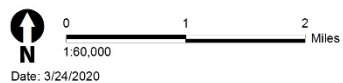


Uinta Basin Railway - Cultural Resources Area of Potential Effects
Sheet 1 of 9

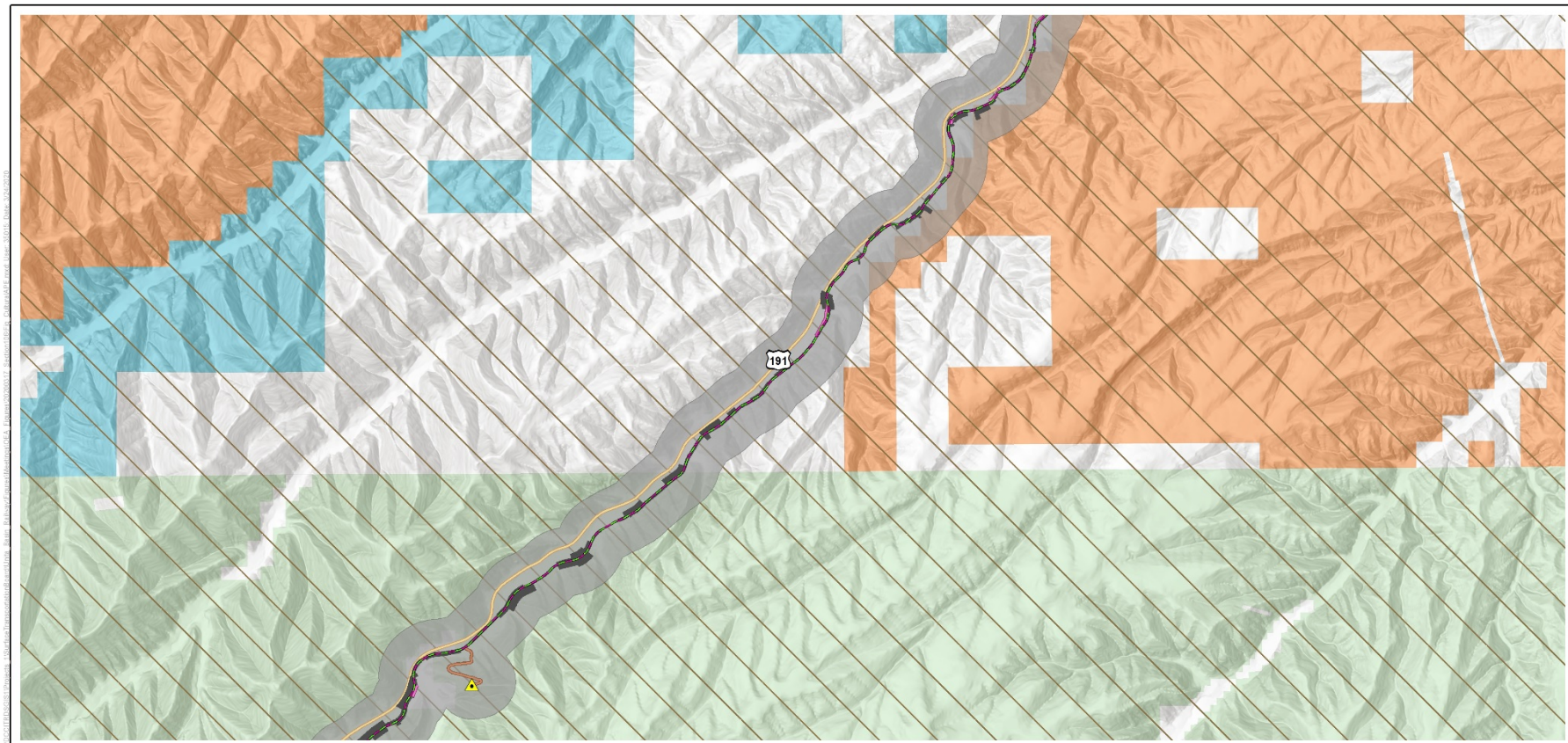


- | | | |
|---|---|--|
| <ul style="list-style-type: none"> All Alternatives Indian Canyon Alternative Wells Draw Alternative Whitmore Park Alternative Indian Canyon and Wells Draw Indian Canyon and Whitmore Park Terminal Tunnel | <ul style="list-style-type: none"> Communication Tower Road Realignment Access Road Limits of Disturbance/Archaeological APE Historical Architecture APE | <ul style="list-style-type: none"> Existing Rail Line Interstate Hwy U.S. Hwy State Route County Road Original Uintah and Ouray Tribal Lands |
|---|---|--|

- Land Status**
- Bureau of Land Management
 - Bureau of Reclamation
 - Private Land
 - State Land
 - Tribal Trust Land
 - U.S. Forest Service



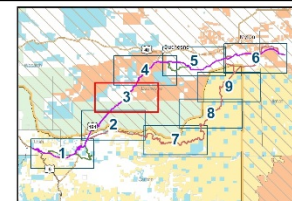
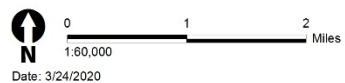
Uinta Basin Railway - Cultural Resources Area of Potential Effects
Sheet 2 of 9



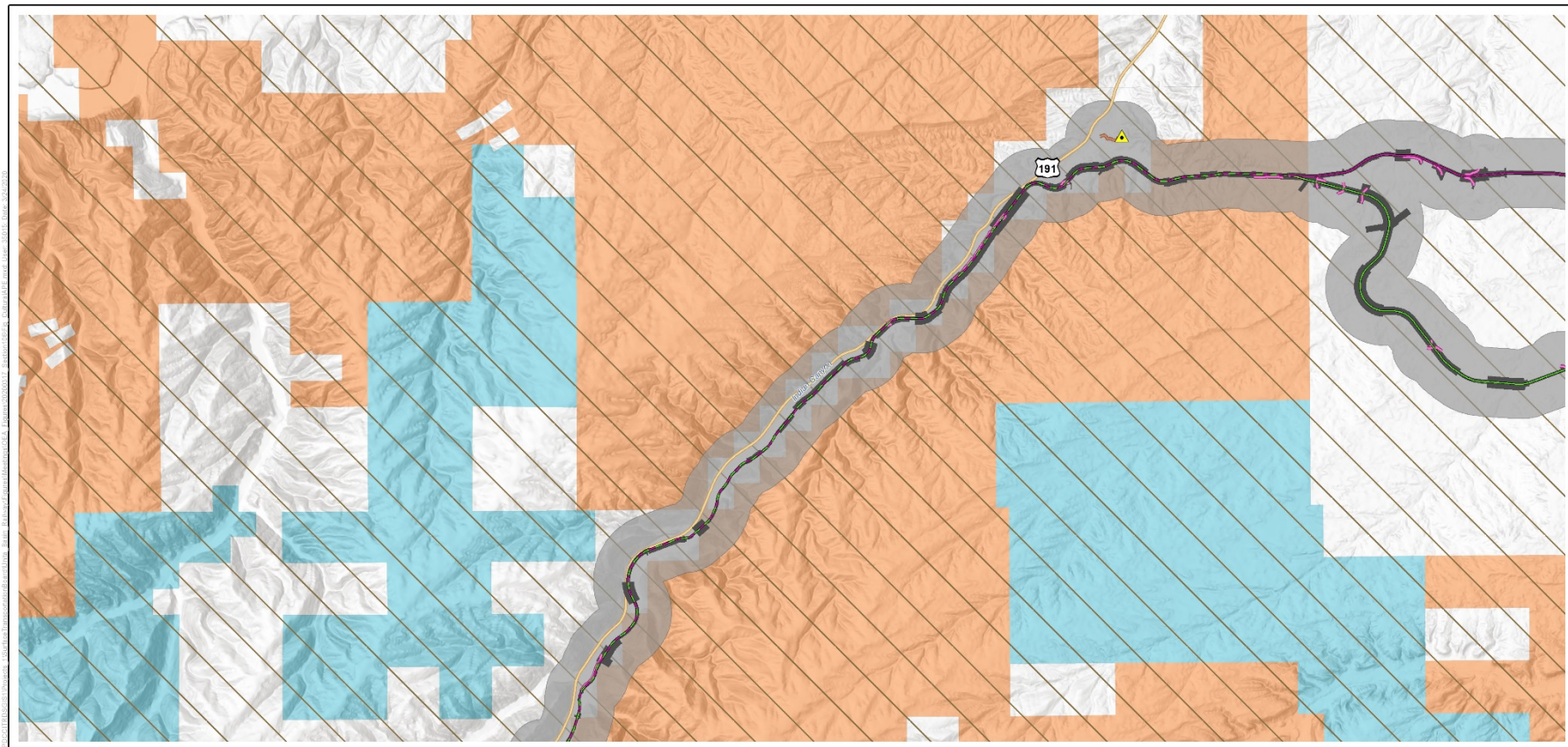
- All Alternatives
- Indian Canyon Alternative
- Wells Draw Alternative
- Whitmore Park Alternative
- Indian Canyon and Wells Draw
- Indian Canyon and Whitmore Park
- ⬮ Terminal
- Tunnel
- ⚠ Communication Tower
- Road Realignment
- Access Road
- ▬ Limits of Disturbance/
Archaeological APE
- ▬ Historical Architecture APE

- Existing Rail Line
- Interstate Hwy
- U.S. Hwy
- State Route
- County Road
- ▭ Original Uintah and
Ouray Tribal Lands

- Land Status**
- ▭ Bureau of Land Management
 - ▭ Bureau of Reclamation
 - ▭ Private Land
 - ▭ State Land
 - ▭ Tribal Trust Land
 - ▭ U.S. Forest Service

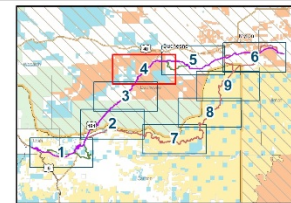
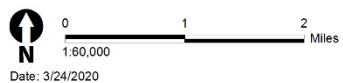


Uinta Basin Railway - Cultural Resources Area of Potential Effects
Sheet 3 of 9

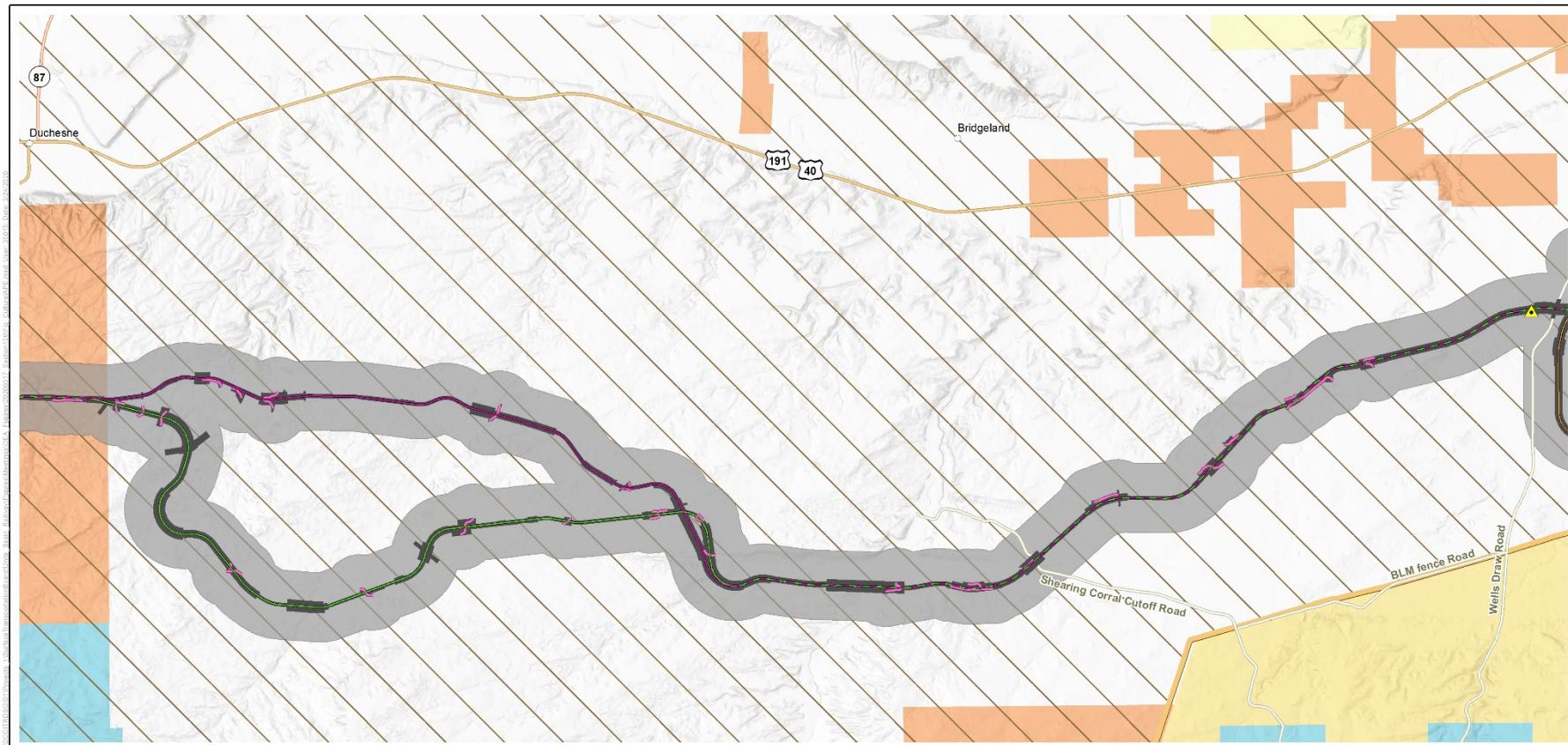


- All Alternatives
- Indian Canyon Alternative
- Wells Draw Alternative
- Whitmore Park Alternative
- Indian Canyon and Wells Draw
- Indian Canyon and Whitmore Park
- Terminal
- Tunnel
- ▲ Communication Tower
- Road Realignment
- Access Road
- Limits of Disturbance/ Archaeological APE
- Historical Architecture APE
- Existing Rail Line
- Interstate Hwy
- U.S. Hwy
- State Route
- County Road
- Original Uintah and Ouray Tribal Lands

- Land Status**
- Bureau of Land Management
 - Bureau of Reclamation
 - Private Land
 - State Land
 - Tribal Trust Land
 - U.S. Forest Service

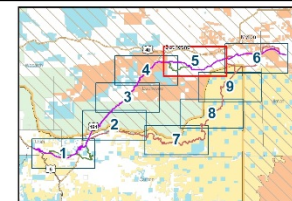
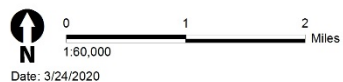


Uinta Basin Railway - Cultural Resources Area of Potential Effects
Sheet 4 of 9

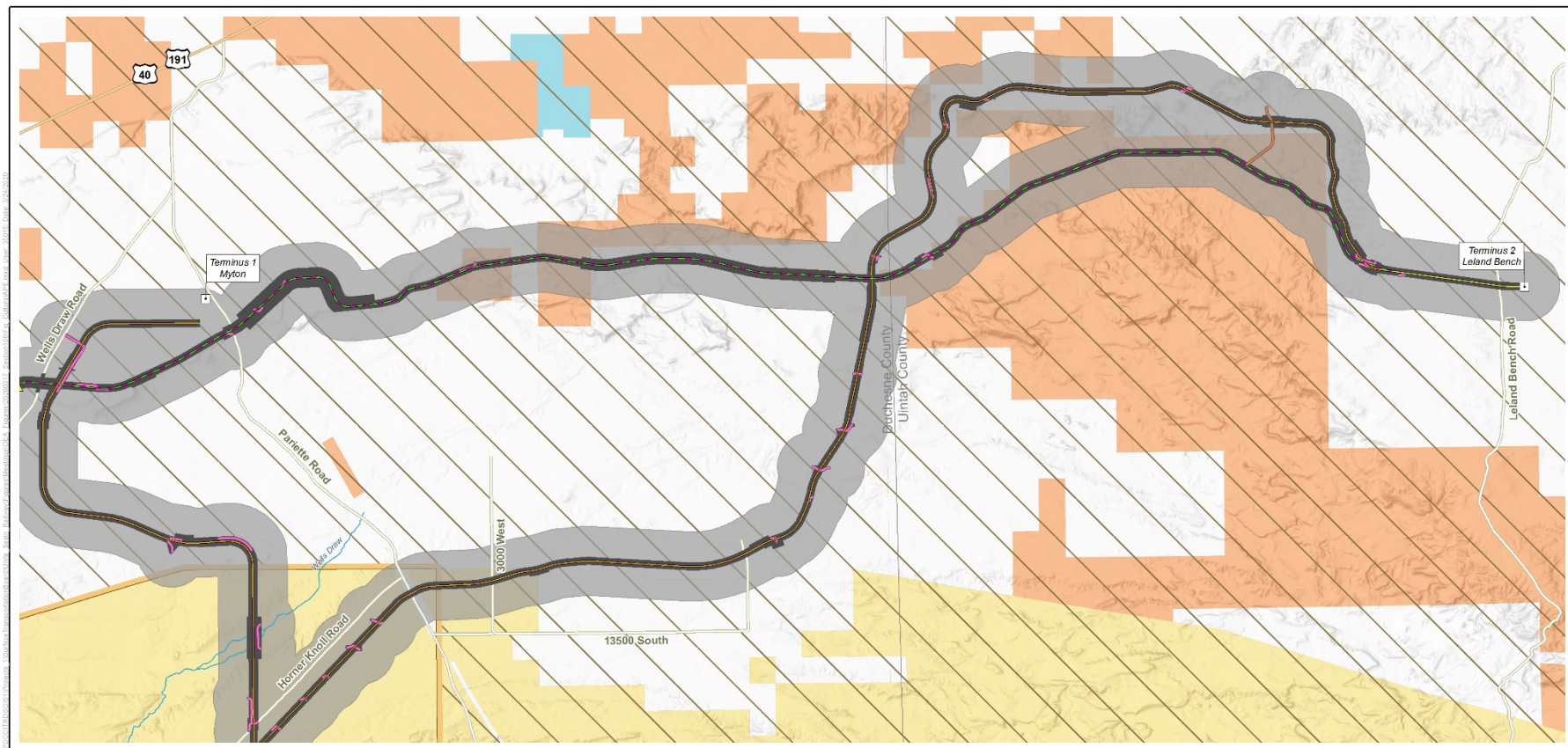


- All Alternatives
- Indian Canyon Alternative
- Wells Draw Alternative
- Whitmore Park Alternative
- Indian Canyon and Wells Draw
- Indian Canyon and Whitmore Park
- Terminal
- Tunnel
- ▲ Communication Tower
- Road Realignment
- Access Road
- Limits of Disturbance/ Archaeological APE
- Historical Architecture APE
- Existing Rail Line
- Interstate Hwy
- U.S. Hwy
- State Route
- County Road
- Original Uintah and Ouray Tribal Lands

- Land Status**
- Bureau of Land Management
 - Bureau of Reclamation
 - Private Land
 - State Land
 - Tribal Trust Land
 - U.S. Forest Service



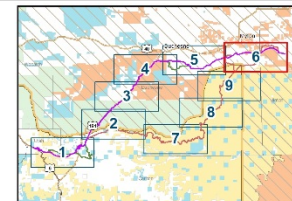
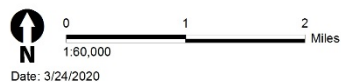
Uinta Basin Railway - Cultural Resources Area of Potential Effects
Sheet 5 of 9



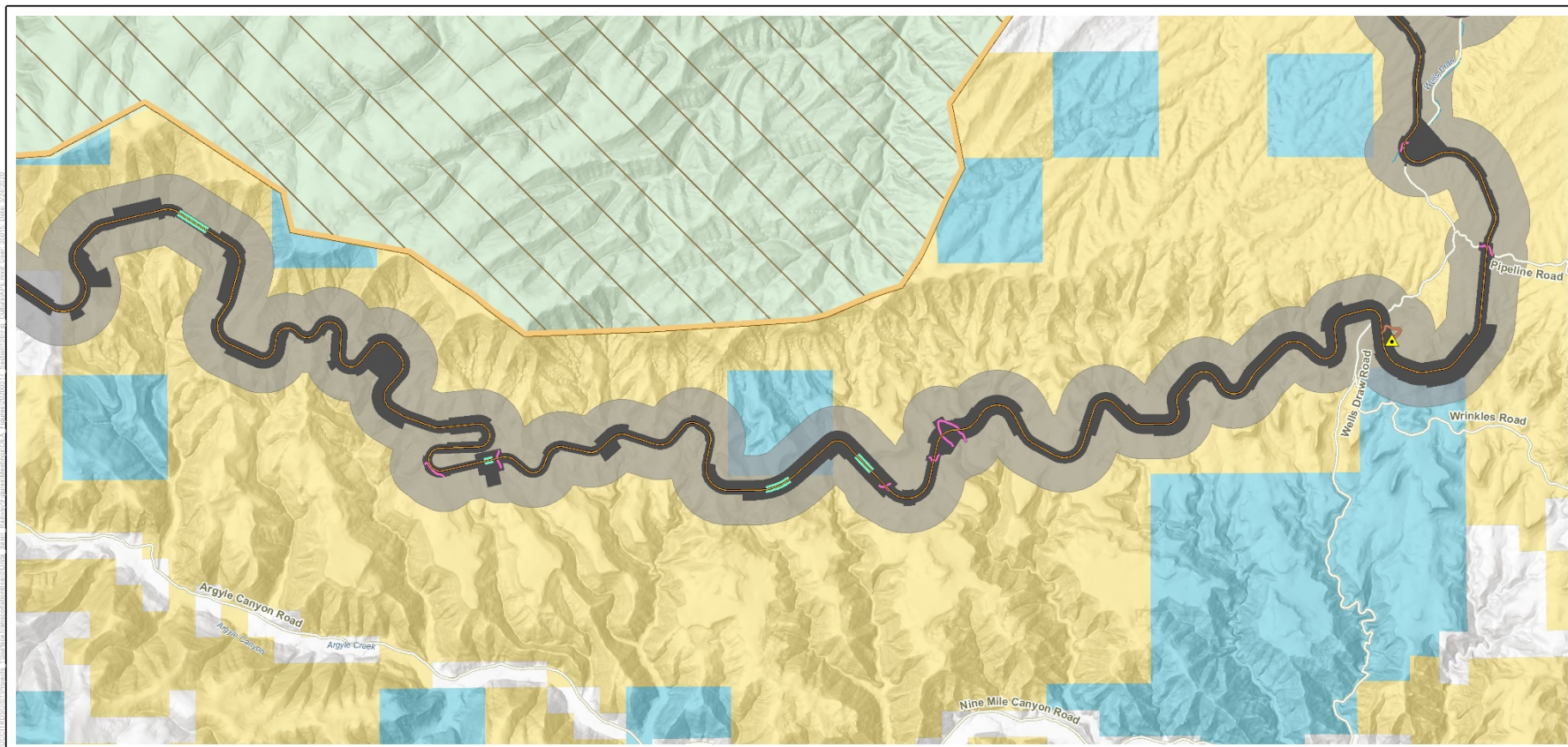
- All Alternatives
- Indian Canyon Alternative
- Wells Draw Alternative
- Whitmore Park Alternative
- Indian Canyon and Wells Draw
- Indian Canyon and Whitmore Park
- Terminal
- Tunnel
- ▲ Communication Tower
- Road Realignment
- Access Road
- Limits of Disturbance/Archaeological APE
- Historical Architecture APE

- Existing Rail Line
- Interstate Hwy
- U.S. Hwy
- State Route
- County Road
- Original Uintah and Ouray Tribal Lands

- Land Status**
- Bureau of Land Management
 - Bureau of Reclamation
 - Private Land
 - State Land
 - Tribal Trust Land
 - U.S. Forest Service



Uinta Basin Railway - Cultural Resources Area of Potential Effects
Sheet 6 of 9

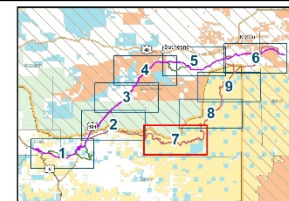
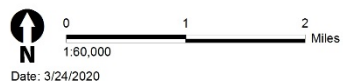


- All Alternatives
- Indian Canyon Alternative
- Wells Draw Alternative
- Whitmore Park Alternative
- Indian Canyon and Wells Draw
- Indian Canyon and Whitmore Park
- Terminal
- Tunnel

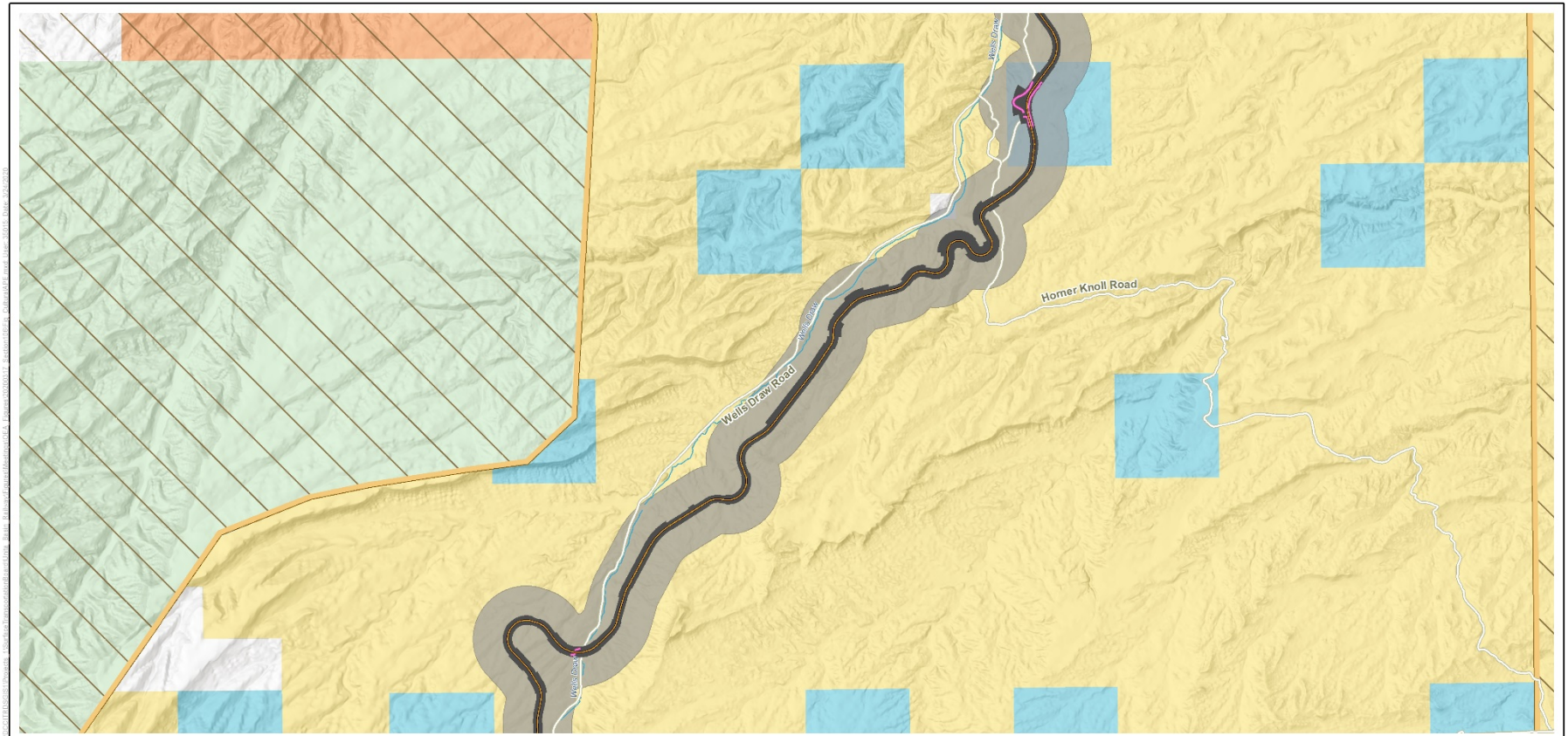
- ▲ Communication Tower
- Road Realignment
- Access Road
- Limits of Disturbance/Archaeological APE
- Historical Architecture APE

- Existing Rail Line
- Interstate Hwy
- U.S. Hwy
- State Route
- County Road
- Original Uintah and Ouray Tribal Lands

- Land Status**
- Bureau of Land Management
 - Bureau of Reclamation
 - Private Land
 - State Land
 - Tribal Trust Land
 - U.S. Forest Service

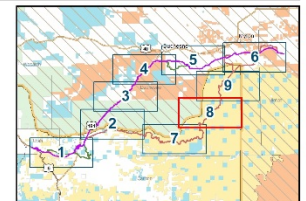


Uinta Basin Railway - Cultural Resources Area of Potential Effects
Sheet 7 of 9

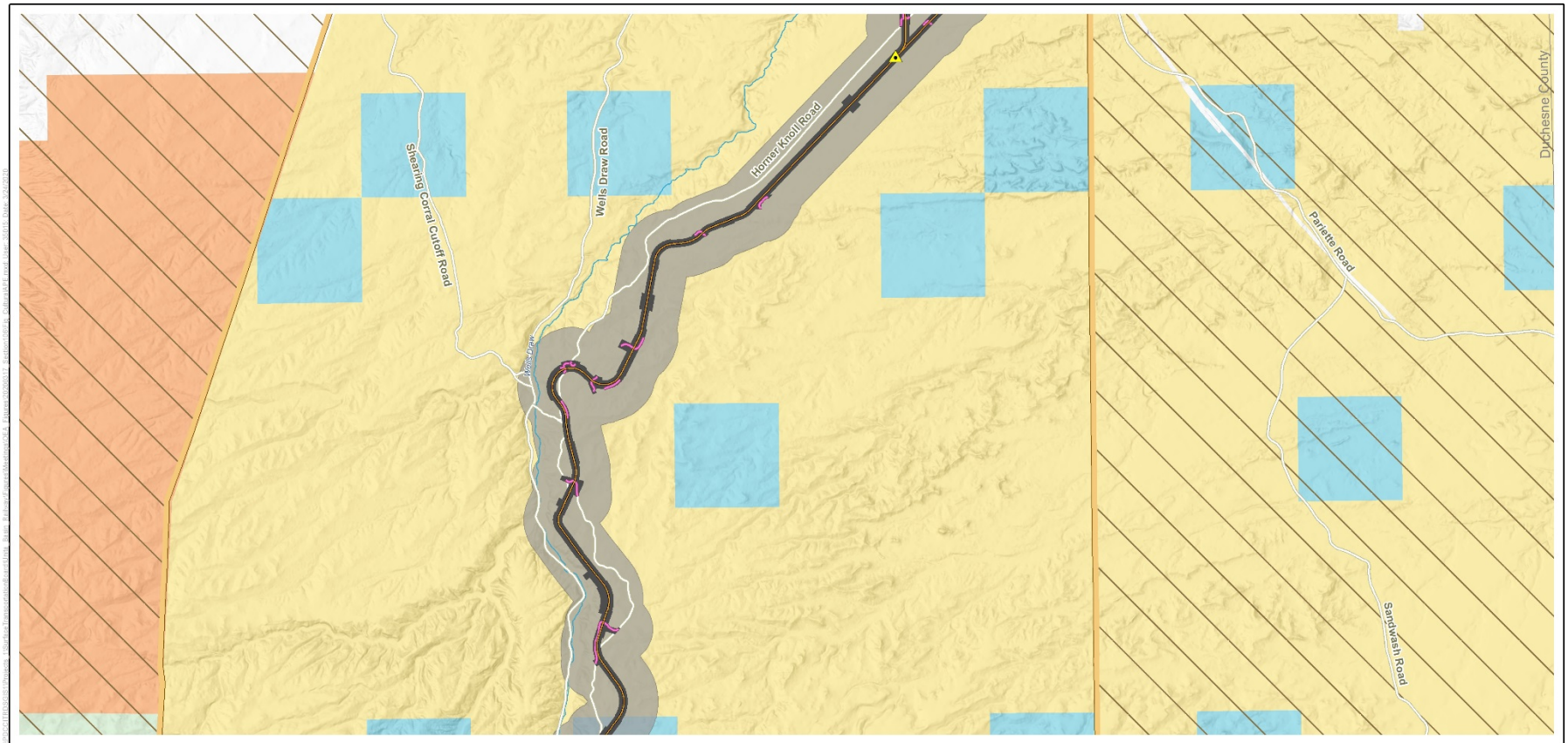


- | | | |
|---|--|--|
| <ul style="list-style-type: none"> All Alternatives Indian Canyon Alternative Wells Draw Alternative Whitmore Park Alternative Indian Canyon and Wells Draw Indian Canyon and Whitmore Park Terminal Tunnel | <ul style="list-style-type: none"> Communication Tower Road Realignment Access Road Limits of Disturbance/ Archaeological APE Historical Architecture APE | <ul style="list-style-type: none"> Existing Rail Line Interstate Hwy U.S. Hwy State Route County Road Original Uintah and Ouray Tribal Lands |
|---|--|--|

- Land Status**
- Bureau of Land Management
 - Bureau of Reclamation
 - Private Land
 - State Land
 - Tribal Trust Land
 - U.S. Forest Service

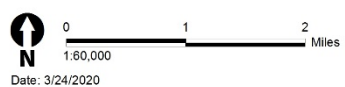


Uinta Basin Railway - Cultural Resources Area of Potential Effects
Sheet 8 of 9

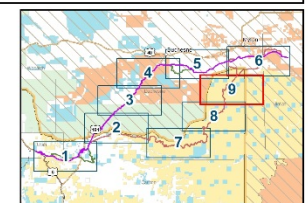


- All Alternatives
- Indian Canyon Alternative
- Wells Draw Alternative
- Whitmore Park Alternative
- Indian Canyon and Wells Draw
- Indian Canyon and Whitmore Park
- Terminal
- Tunnel
- ▲ Communication Tower
- Road Realignment
- Access Road
- Limits of Disturbance/ Archaeological APE
- Historical Architecture APE
- Existing Rail Line
- Interstate Hwy
- U.S. Hwy
- State Route
- County Road
- Original Uintah and Ouray Tribal Lands

- Land Status**
- Bureau of Land Management
 - Bureau of Reclamation
 - Private Land
 - State Land
 - Tribal Trust Land
 - U.S. Forest Service



Date: 3/24/2020



Uinta Basin Railway - Cultural Resources Area of Potential Effects
Sheet 9 of 9



Uinta Basin Railway

ENVIRONMENTAL IMPACT STATEMENT

Identification and Evaluation

- Coalition's draft technical reports posted on project website
- Technical reports currently undergoing revision
- Opportunity for initial comments



Uinta Basin Railway

ENVIRONMENTAL IMPACT STATEMENT

Identification and Evaluation Context

➤ Prehistoric Context

- ☐ Paleoarchaic Period (ca. 10,000 - 6000 B.C.)
- ☐ Archaic Period (6000 B.C. – A.D. 550)
- ☐ Formative Period (A.D. 550 to 1300)
- ☐ Late Prehistoric / Ethnohistoric Period (1300-1800)

➤ Historic Context

- ☐ Exploration and Early History
- ☐ Early Euro-American Settlement, Reservation Establishment, and Resource Development, ca. 1850-1904
- ☐ Permanent Settlement, Growth, and Development, 1905-1948
- ☐ Farming, Ranching, and Resource Extraction, 1949-present

Source: SWCA



Uinta Basin Railway

ENVIRONMENTAL IMPACT STATEMENT

Identification and Evaluation Architectural Examples in the APE

➤ Vernacular Log Cabin

☐ Whitmore Park/

Indian Canyon

☐ Along SR 91

☐ Six outbuildings

APN: 00-0010-9329





Uinta Basin Railway

ENVIRONMENTAL IMPACT STATEMENT

Identification and Evaluation Architectural Examples in the APE

➤ National / Folk Style

Dwelling

- ☐ Whitmore Park/
Indian Canyon
- ☐ Along SR 91
- ☐ Secondary residence
- ☐ Nine outbuildings

Ref. 00-0010-7965





Uinta Basin Railway

ENVIRONMENTAL IMPACT STATEMENT

Identification and Evaluation Architectural Examples in the APE

- **Vernacular Log Cabin**
 - ☐ Whitmore Park/
Indian Canyon
 - ☐ Along SR 91
 - ☐ Five associated buildings

Ref. 00-0009-9287





Uinta Basin Railway

ENVIRONMENTAL IMPACT STATEMENT

Next Steps

- Review questions and comments from this call
- Prepare and post a call summary
- Review comments on APE
- Technical reports undergoing revision
- Continue building out project website



Uinta Basin Railway

ENVIRONMENTAL IMPACT STATEMENT

Draft Agenda for Next Call

- Review identification and evaluation effort
- Opportunities for comment



Uinta Basin Railway

ENVIRONMENTAL IMPACT STATEMENT

<http://uintabasinrailwayeis.com/>

Alan Tabachnick

Historic Preservation Specialist
Office of Environmental Analysis
Surface Transportation Board

Alan.tabachnick@stb.gov

202-245-0367