



Uinta Basin Railway

ENVIRONMENTAL IMPACT STATEMENT

Section 106 Consulting Party Kick-off Teleconference

Uinta Basin Railway EIS
January 22, 2020



Uinta Basin Railway

ENVIRONMENTAL IMPACT STATEMENT

Agenda

- Introductions
- Undertaking/Project Description
- Consultation to Date
- Identification and Evaluation Effort
- Next Steps
- Draft Agenda for Next Call



Uinta Basin Railway

ENVIRONMENTAL IMPACT STATEMENT

Introductions

Lead Agency - 800.2 (a) (2)

- Surface Transportation Board

Other Federal Agencies – 800.2 (a)

- Bureau of Land Management
- U.S. Forest Service, Ashley National Forest
- U.S. Army Corps of Engineers
- Bureau of Indian Affairs
- U.S. Environmental Protection Agency

Council – 800.2 (b)

- Advisory Council on Historic Preservation

State Historic Preservation Officer – 800.2 (c) (1)

- Utah Division of State History

Indian Tribes – 800.2 (c) (2) (i)

- Ute Indian Tribe of the Uintah and Ouray Reservation

Indian Tribes – 800.2 (c) (2) (ii)

- The Hopi Tribe of Arizona

Representatives of Local Governments – 800.2 (c) (3)

- Utah Public Lands Policy Coordinating Office
- Uintah County
- Duchesne County
- Carbon County

Applicant for Federal permit – 800.2 (c) (4)

- Seven County Infrastructure Coalition

Additional Consulting Parties 800.2. (c) (5)

- State Institutional Trust Lands Administration
- Nine Mile Canyon Coalition
- Colorado Plateau Archaeological Alliance



Uinta Basin Railway

ENVIRONMENTAL IMPACT STATEMENT

Project Introduction and Updates

Project Overview

Project Map

Environmental Review Process

National Historic Preservation Act

Public Involvement

Documents & Links

Project Mailing List

Contact Us

This project website was developed and is maintained by the Surface Transportation Board, the lead federal agency responsible for preparing the Uinta Basin Railway Environmental Impact Statement. The Seven County Infrastructure Coalition has no role in determining the content of this website.

HOME PAGE

Welcome to the project website for the Uinta Basin Railway Environmental Impact Statement (EIS).

Project Introduction

The Seven County Infrastructure Coalition (Coalition) plans to file a request with the Surface Transportation Board (Board) for authority to construct and operate an approximately 85-mile common-carrier rail line connecting two termini in the Uinta Basin near South Myton Bench, Utah, and Leland Bench, Utah, to the national rail network. The construction and operation of this proposed project has the potential to result in significant environmental impacts. Therefore, the Board's Office of Environmental Analysis (OEA) has determined that the preparation of an EIS is appropriate pursuant to the National Environmental Policy Act (NEPA).

Project Updates

- OEA issued a Notice of Availability of the Final Scope of Study for the EIS in the Federal Register on December 13, 2019. [Click here to view.](#)
- The scoping public comment period is now closed. [Click here](#) to learn more about the scoping process.
- Information from the July 2019 public scoping meetings is available to review. [Click here to view.](#)
- OEA issued a Notice of Intent and Draft Scope of Study for the EIS in the Federal Register, initiating the scoping process, on June 19, 2019. To see the Notice of Intent and Draft Scope of Study, [click here.](#)
- If you wish to be added to the project mailing list, [click here.](#)



Uinta Basin Railway

ENVIRONMENTAL IMPACT STATEMENT

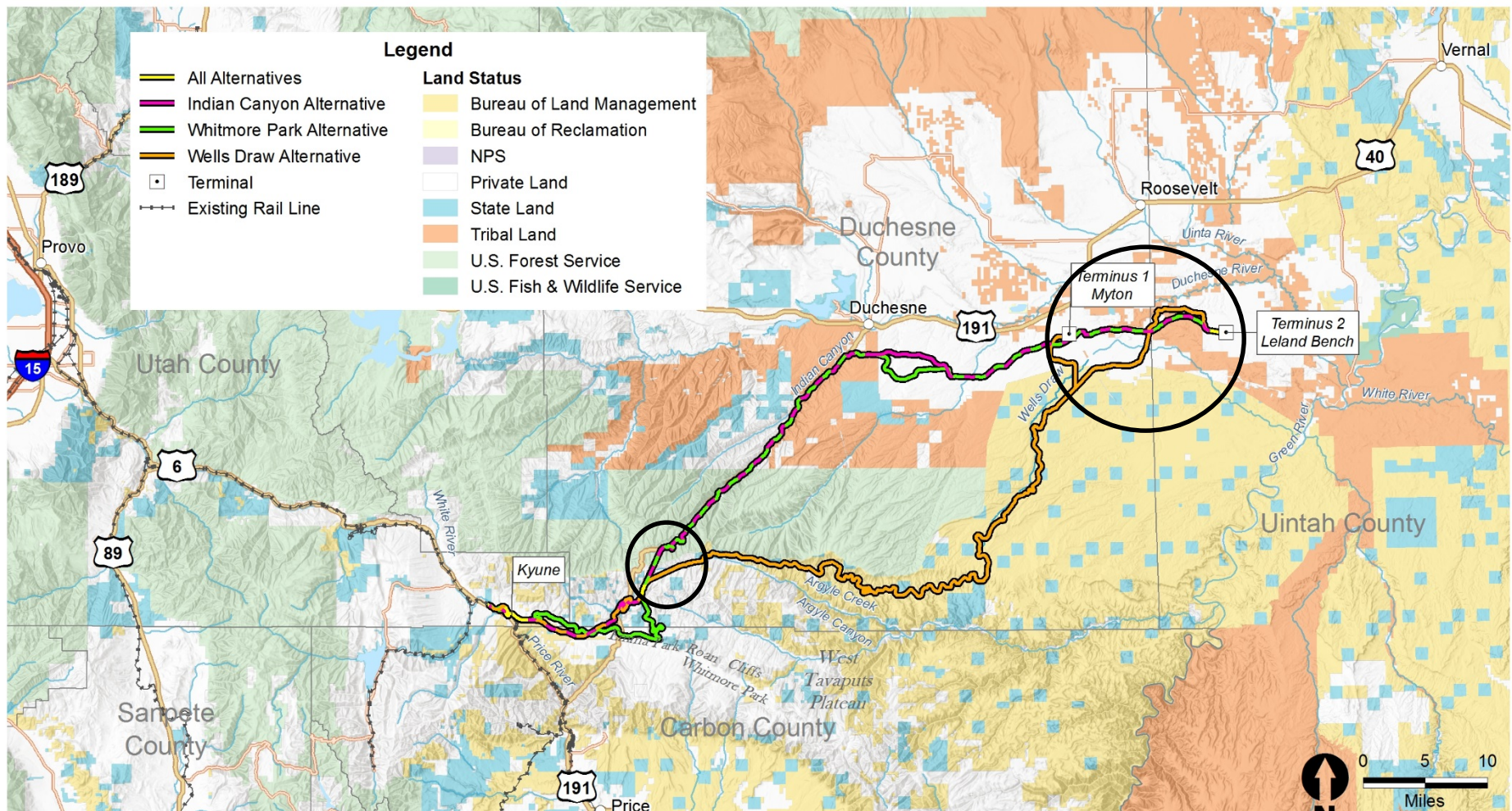
Undertaking/Project Description

- Final Scope of Study published December 13, 2019
 - Background
 - Purpose and Need
 - Proposed Action and Alternatives
 - Three alternatives carried forward for study
 - Indian Canyon
 - Whitmore Park
 - Wells Draw
 - Analysis of Cultural and Historic Resources



Uinta Basin Railway

ENVIRONMENTAL IMPACT STATEMENT





Uinta Basin Railway

ENVIRONMENTAL IMPACT STATEMENT

Section 106 Consultation to Date Consultation Timeline

Activity	Date
Initiation Letters	April & June 2019
Initiation Follow-up, telephone calls and emails	Ongoing
Draft scope of study	June 2019
Scoping Meetings	July 2019
Scoping comment period	June – September 2019
Final scope of study	December 2019
Consultation Meetings	Starting January 2020



Uinta Basin Railway

ENVIRONMENTAL IMPACT STATEMENT

Consultation to Date Invited Consulting Parties

Accepted Consulting Party Status

Advisory Council on Historic Preservation	Seven County Infrastructure Coalition
BLM Price Field Office	State Institutional Trust Lands Administration
BLM Vernal Field Office	The Hopi Tribe of Arizona
Bureau of Indian Affairs, Uintah and Ouray Agency	U.S. Army Corps of Engineers, Sacramento District
Bureau of Indian Affairs, Western Region	U.S. Environmental Protection Agency
Carbon County	U.S. Forest Service, Ashley National Forest, Duchesne/Roosevelt Ranger District
Colorado Plateau Archaeological Alliance	Uintah County
Duchesne County	Utah Division of State History
Nine Mile Canyon Coalition	Ute Indian Tribe of the Uintah and Ouray Reservation
Public Lands Policy Coordinating Office	---



Uinta Basin Railway

ENVIRONMENTAL IMPACT STATEMENT

Consultation to Date Invited Consulting Parties

Declined Consulting Party Status

Shoshone-Bannock Tribes of the Fort Hall
Reservation, Idaho

Federal Highway Administration

National Trust for Historic Preservation

Navajo Nation, Arizona, New Mexico, and
Utah

Paiute Indian Tribe of Utah

Response to Consulting Party Invitation Pending

Apache Tribe of Oklahoma	Preservation Utah
Colorado Office of Archaeology and Historic Preservation*	Rio Blanco County
Colorado Preservation, Inc.*	Skull Valley Band of the Goshute Indians
Confederated Tribes of the Goshute Reservation, Nevada and Utah	Southern Utah Wilderness Alliance
Eastern Shoshone Tribe of the Wind River Reservation, Wyoming	The Northwestern Band of the Shoshone Nation, Utah
Fort Belknap Indian Community of the Fort Belknap Reservation of Montana	Utah County
FRA Office of Program Delivery	White Mesa / Ute Mountain Ute Tribe, Utah and Colorado
Moffat County*	---

* Colorado agencies were informed when the Craig route was removed from consideration and did not express an interest in further participation



Uinta Basin Railway

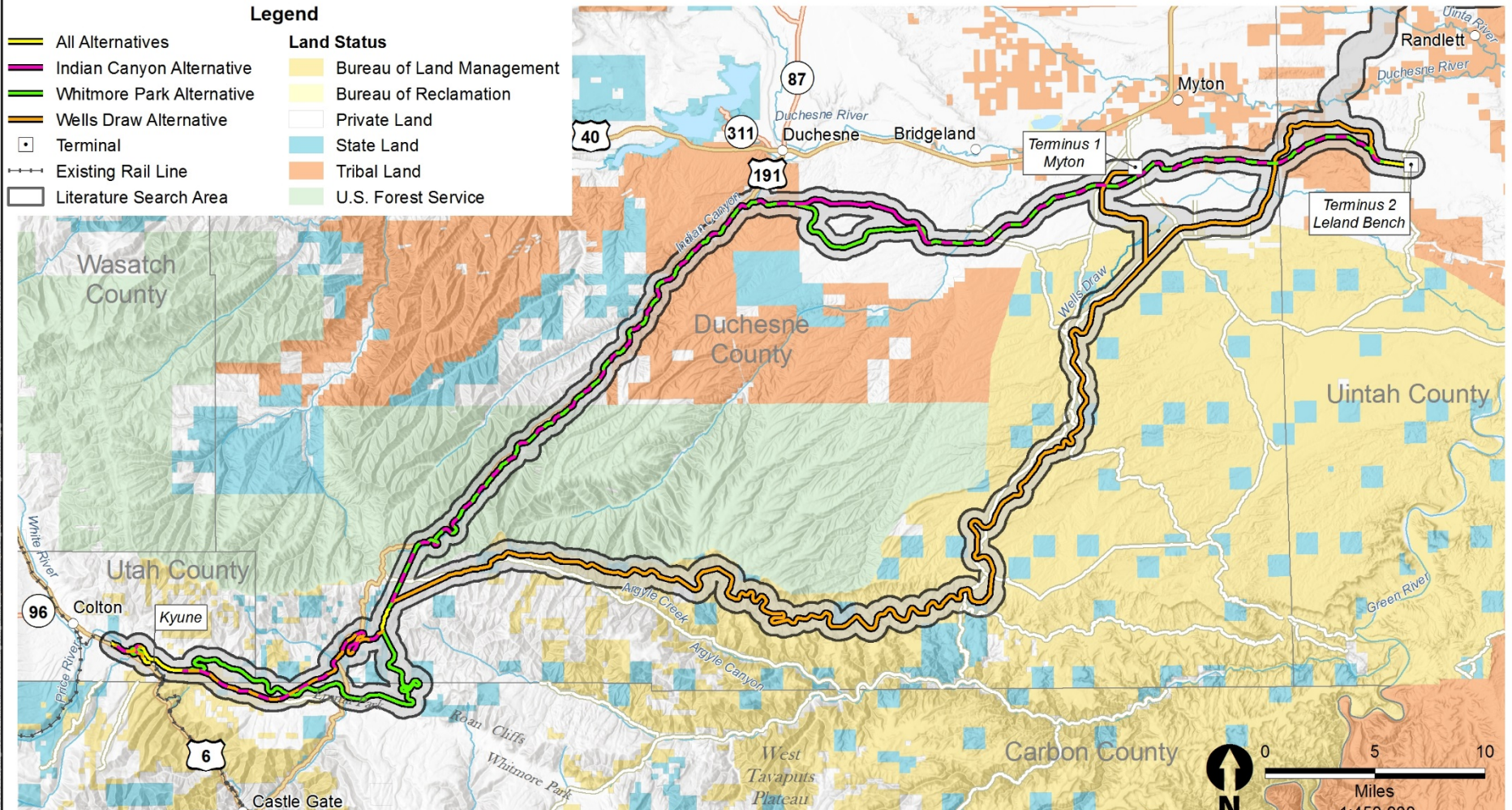
ENVIRONMENTAL IMPACT STATEMENT

Legend

- All Alternatives
- Indian Canyon Alternative
- Whitmore Park Alternative
- Wells Draw Alternative
- Terminal
- Existing Rail Line
- Literature Search Area

Land Status

- Bureau of Land Management
- Bureau of Reclamation
- Private Land
- State Land
- Tribal Land
- U.S. Forest Service





Uinta Basin Railway

ENVIRONMENTAL IMPACT STATEMENT

Legend

— Uinta Basin Rail Alternatives

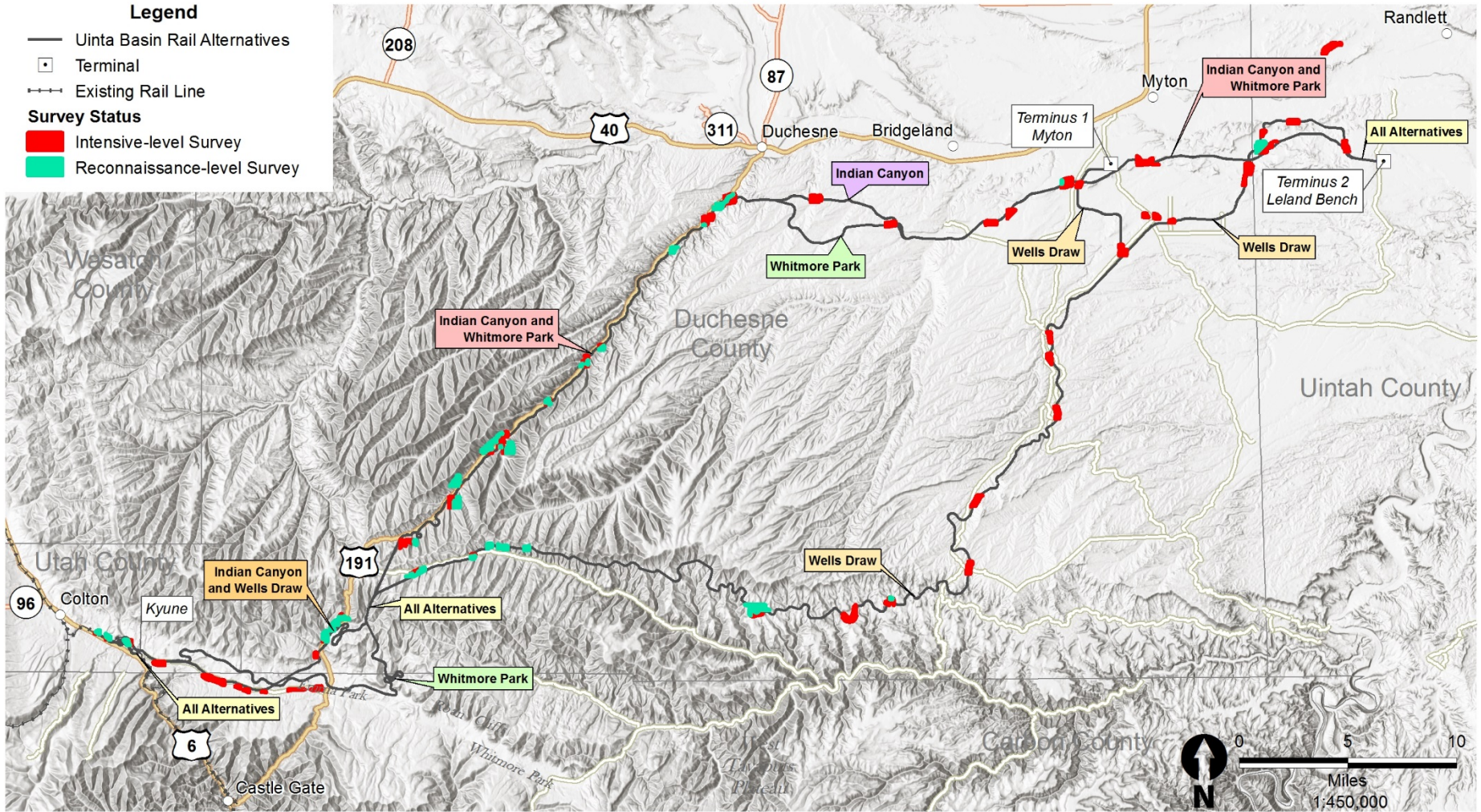
□ Terminal

--- Existing Rail Line

Survey Status

■ Intensive-level Survey

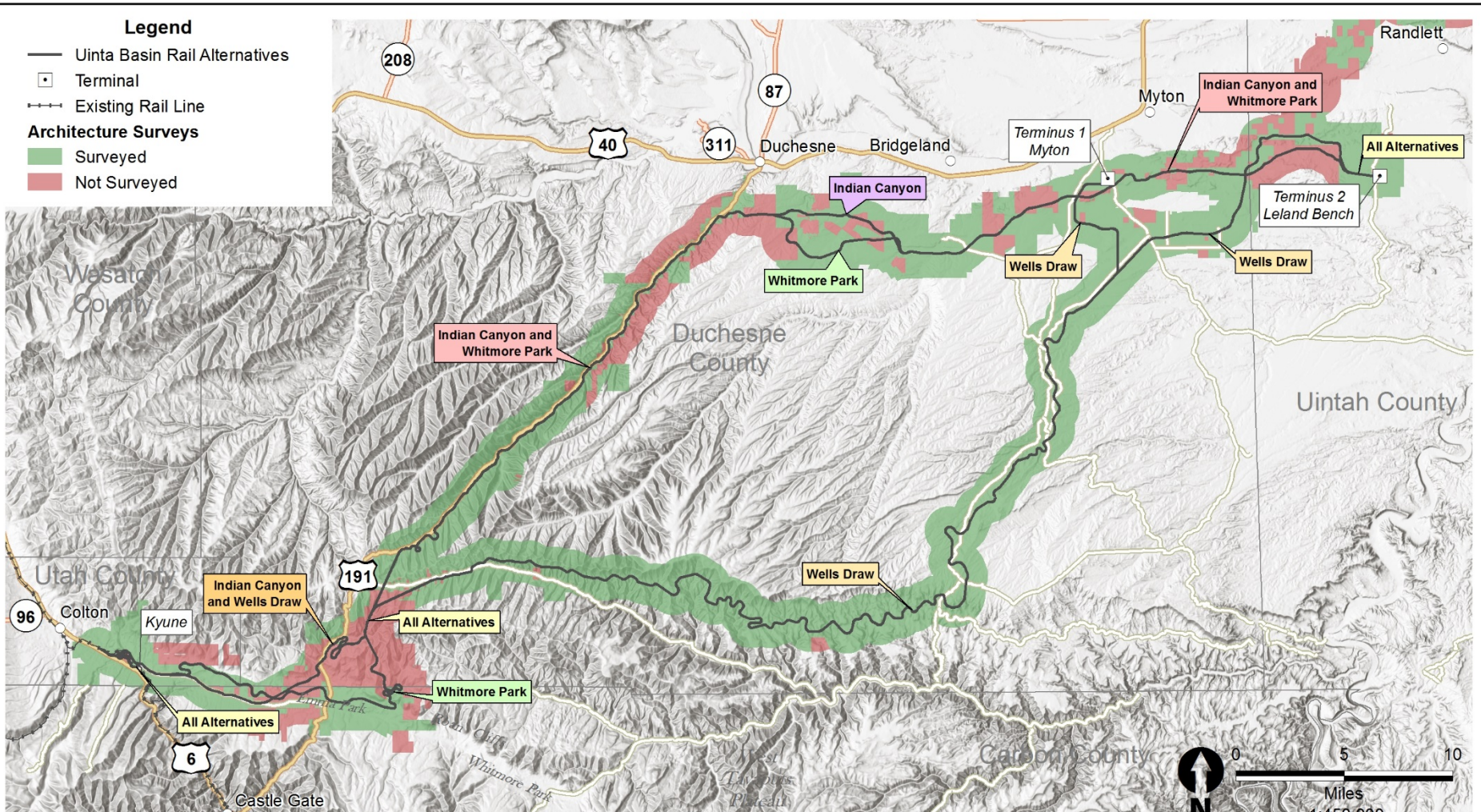
■ Reconnaissance-level Survey





Uinta Basin Railway

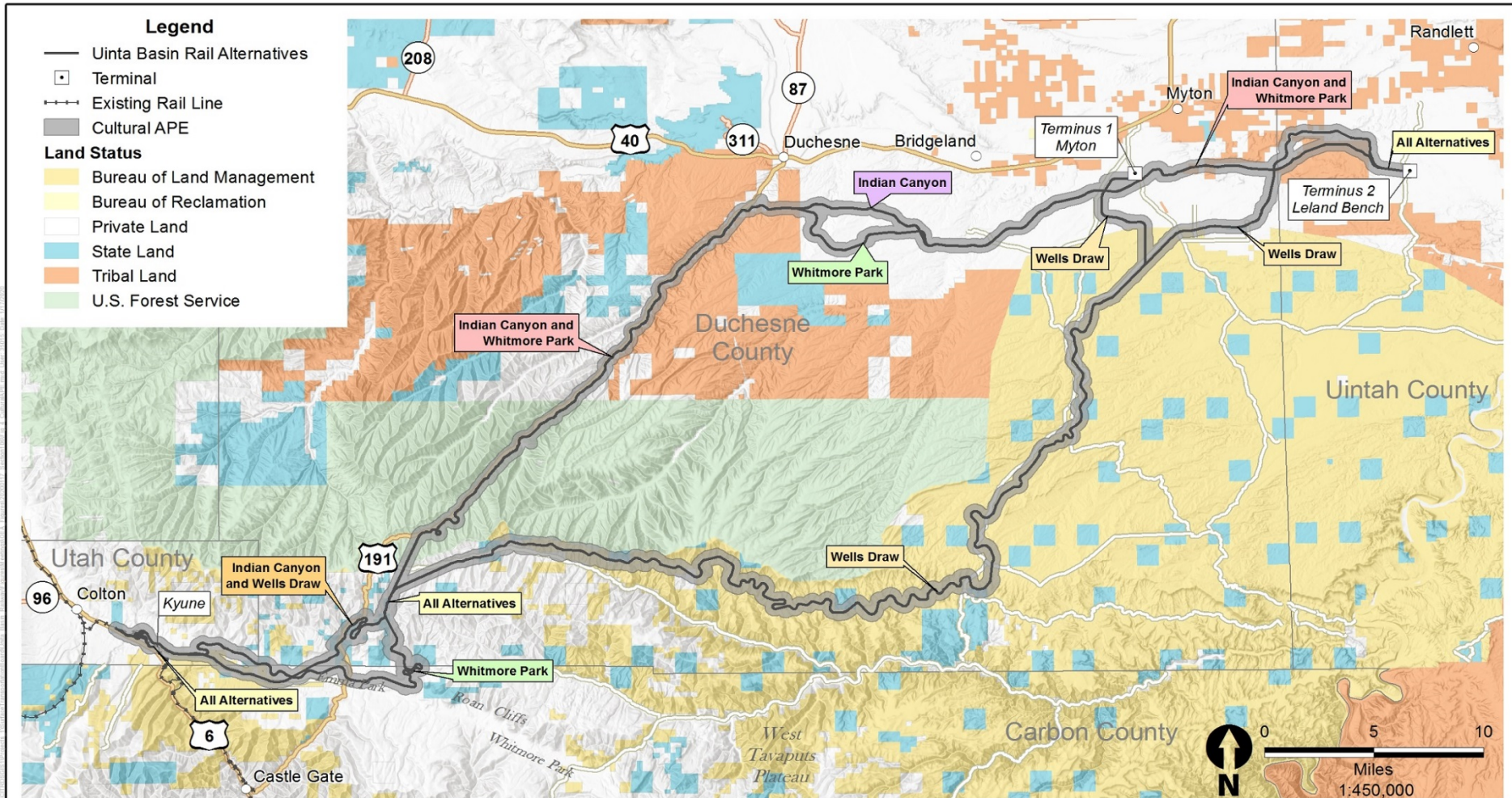
ENVIRONMENTAL IMPACT STATEMENT





Uinta Basin Railway

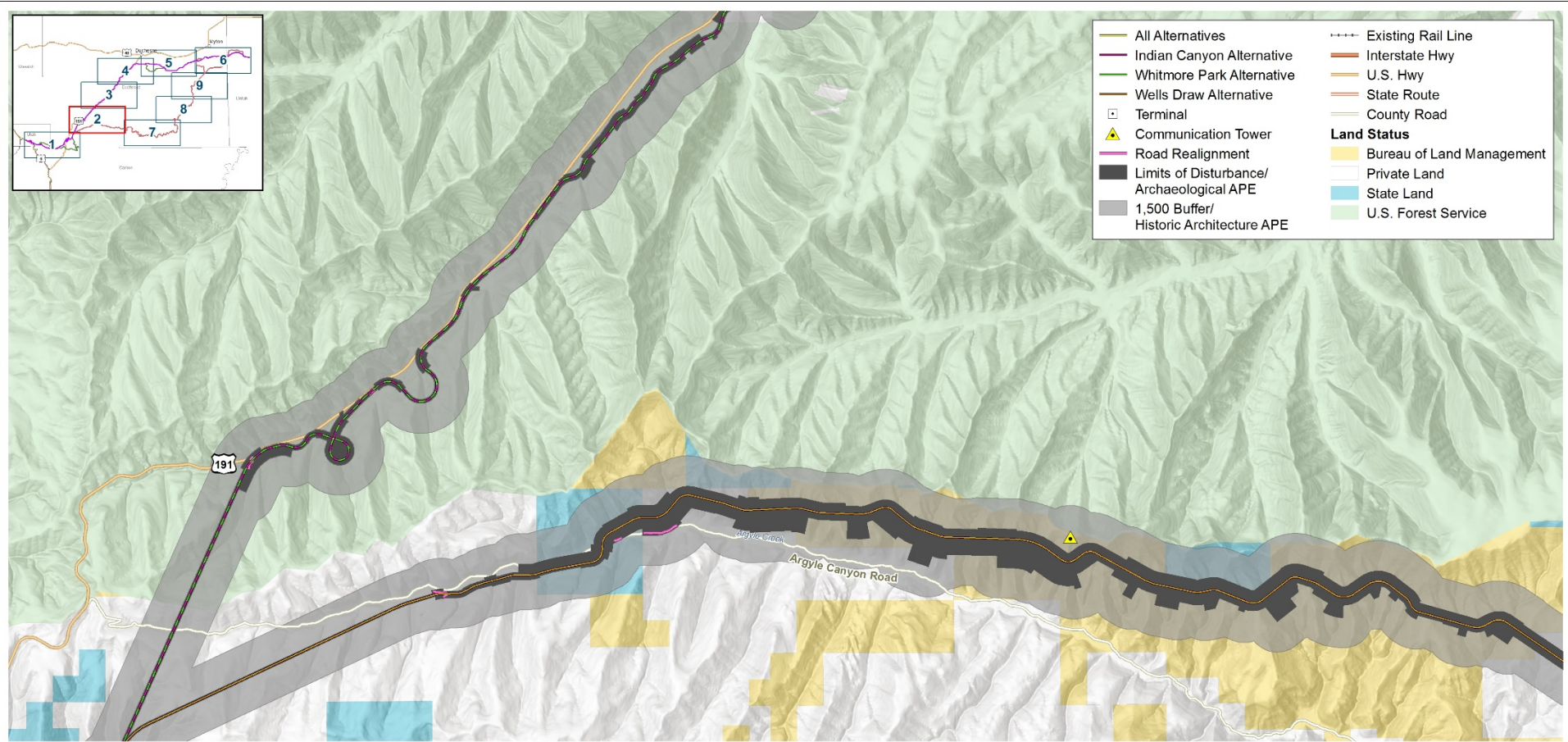
ENVIRONMENTAL IMPACT STATEMENT





Uinta Basin Railway

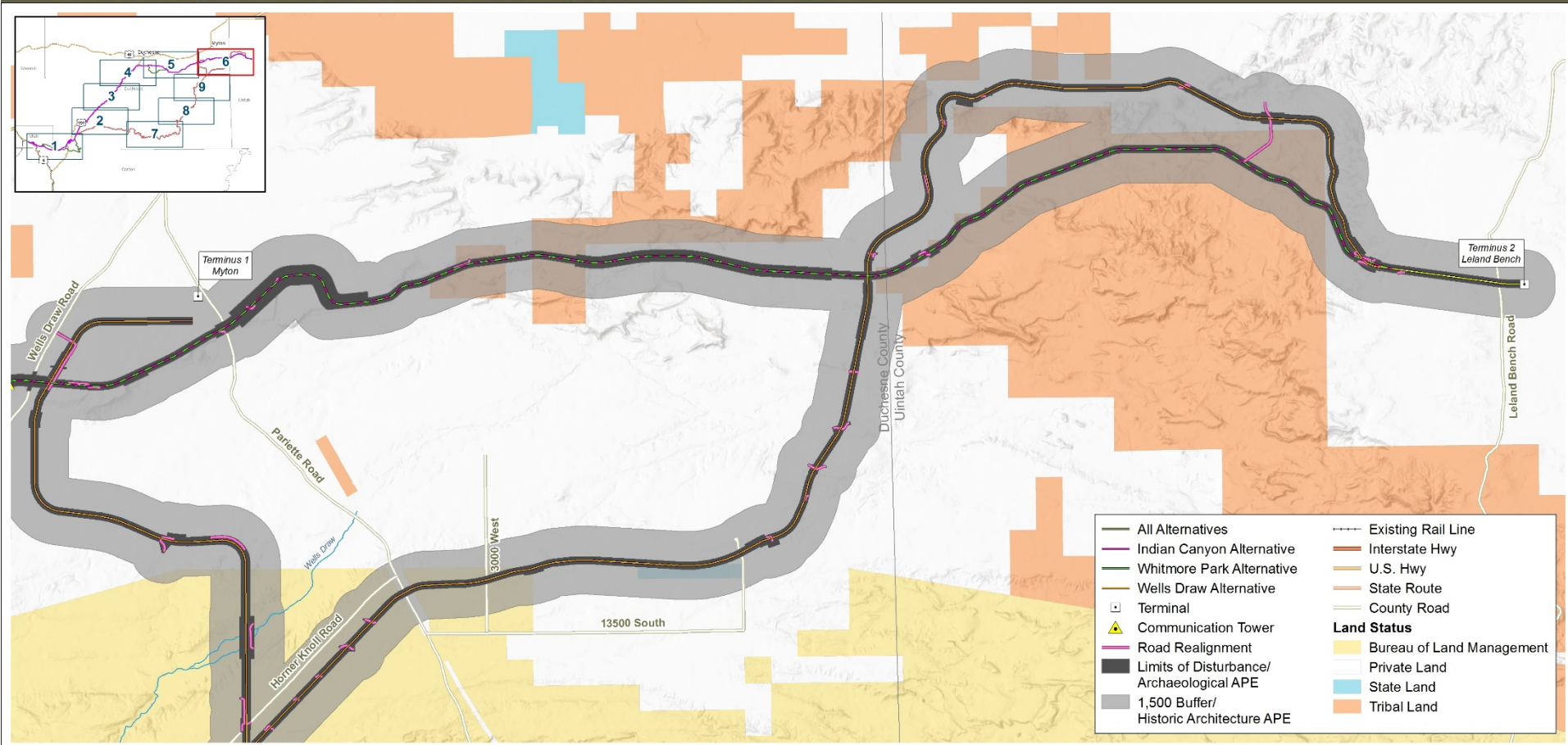
ENVIRONMENTAL IMPACT STATEMENT





Uinta Basin Railway

ENVIRONMENTAL IMPACT STATEMENT





Uinta Basin Railway

ENVIRONMENTAL IMPACT STATEMENT

Next Steps

- Review questions and comments from this call
- Prepare and distribute call summary
- Finalize draft APE
- Distribute draft APE for comment
- Continue building out project website
- Add this PowerPoint to project website



Uinta Basin Railway

ENVIRONMENTAL IMPACT STATEMENT

Draft Agenda for Next Call

- Review APE
- Opportunity for comments on APE
- Preview Identification and Evaluation Results



Uinta Basin Railway

ENVIRONMENTAL IMPACT STATEMENT

Upcoming Consulting Party Meetings Tentative Schedule

Date	Proposed Content
February 26, 2020	Review and comment on APE, introduction to identification and evaluation results
March 25, 2020	Review identification and evaluation results, preview effects analysis
April 22, 2020	Review effects analysis, initial programmatic agreement discussion
May 27, 2020	Programmatic agreement
June 24, 2020	Review draft programmatic agreement
July 22, 2020	Final programmatic agreement



Uinta Basin Railway

ENVIRONMENTAL IMPACT STATEMENT

<http://uintabasinrailwayeis.com/>

Alan Tabachnick

Historic Preservation Specialist
Office of Environmental Analysis
Surface Transportation Board

Alan.tabachnick@stb.gov

202-245-0367